



# New Jersey Storm Water Regulations and Equipment Wash Pads

## **SBR #7**

### **Maintenance Yards and Highway Service Areas**

- Develop and implement an operation and maintenance program that prevents or reduces pollutant runoff
- Permit requires:
  - Construct permanent indoor storage for de-icing materials
  - Develop and implement SOPs for vehicle fueling, bulk delivery, and inspection and maintenance of storage tanks, piping, and pumps
  - Implement vehicle maintenance practices
  - No discharge of wash water without proper BMPs
  - Implement good housekeeping practices





## *Considerations for Wash Pad Best Management Practices*

- 100% containment of all wash water
  - Proven and practical wash pad designs
    - Above-grade steel pads
    - Concrete pads
- Proper Wash Water Disposal
  - Pre-filtering and sanitary sewer discharge
  - Reclaim and recycle systems



# Wash Pad Options

## Above Grade Steel Wash Pad





# Wash Pad Options

## Above Grade Steel Wash Pad

### Pros

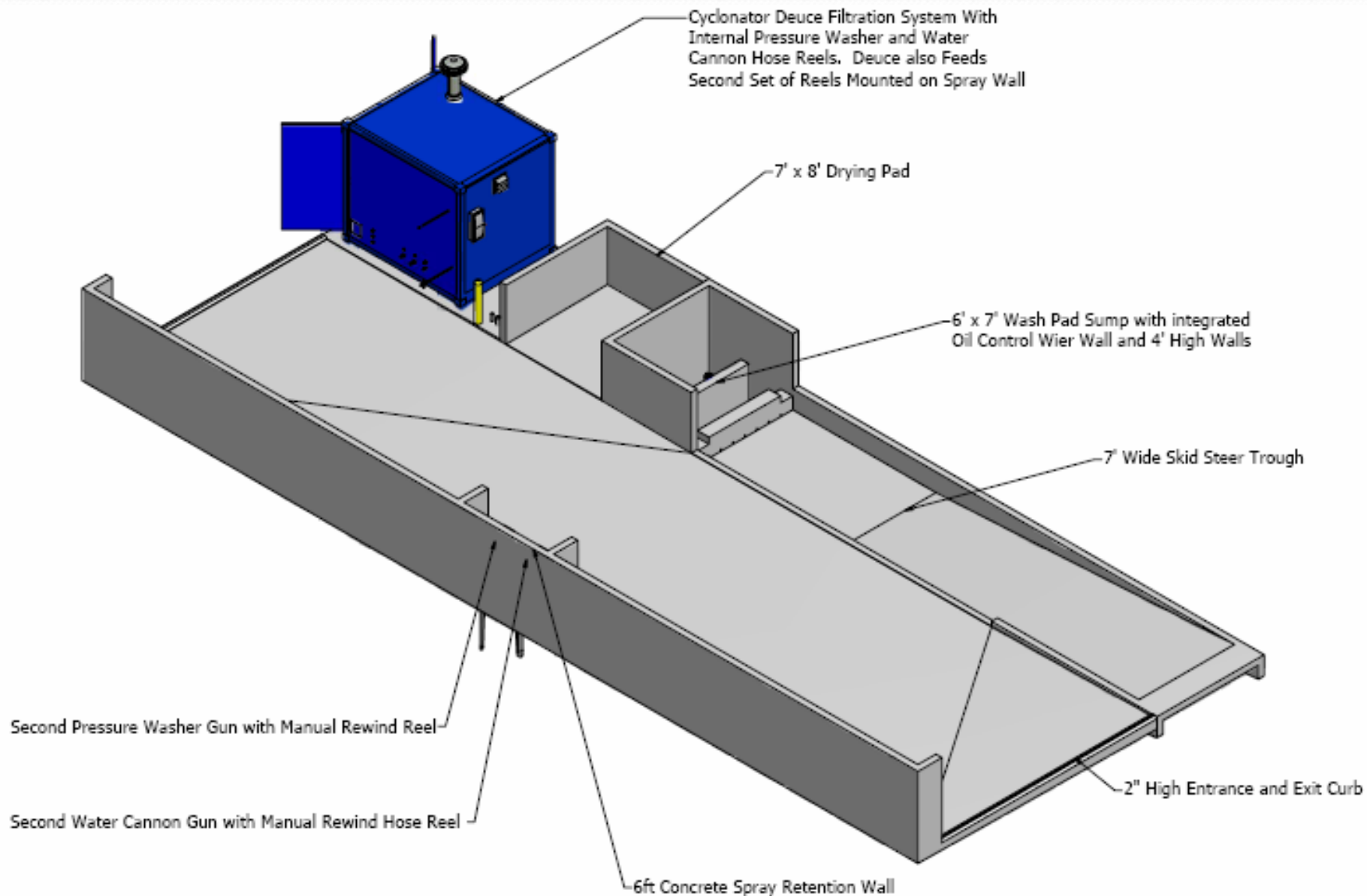
- Portable
- Flexible sizing options
- Heavy Duty – Up to 130,000 lbs
- No permits required
- Minimal site work – level and compacted surface

### Cons

- More expensive than concrete
- Limited heavy mud capabilities

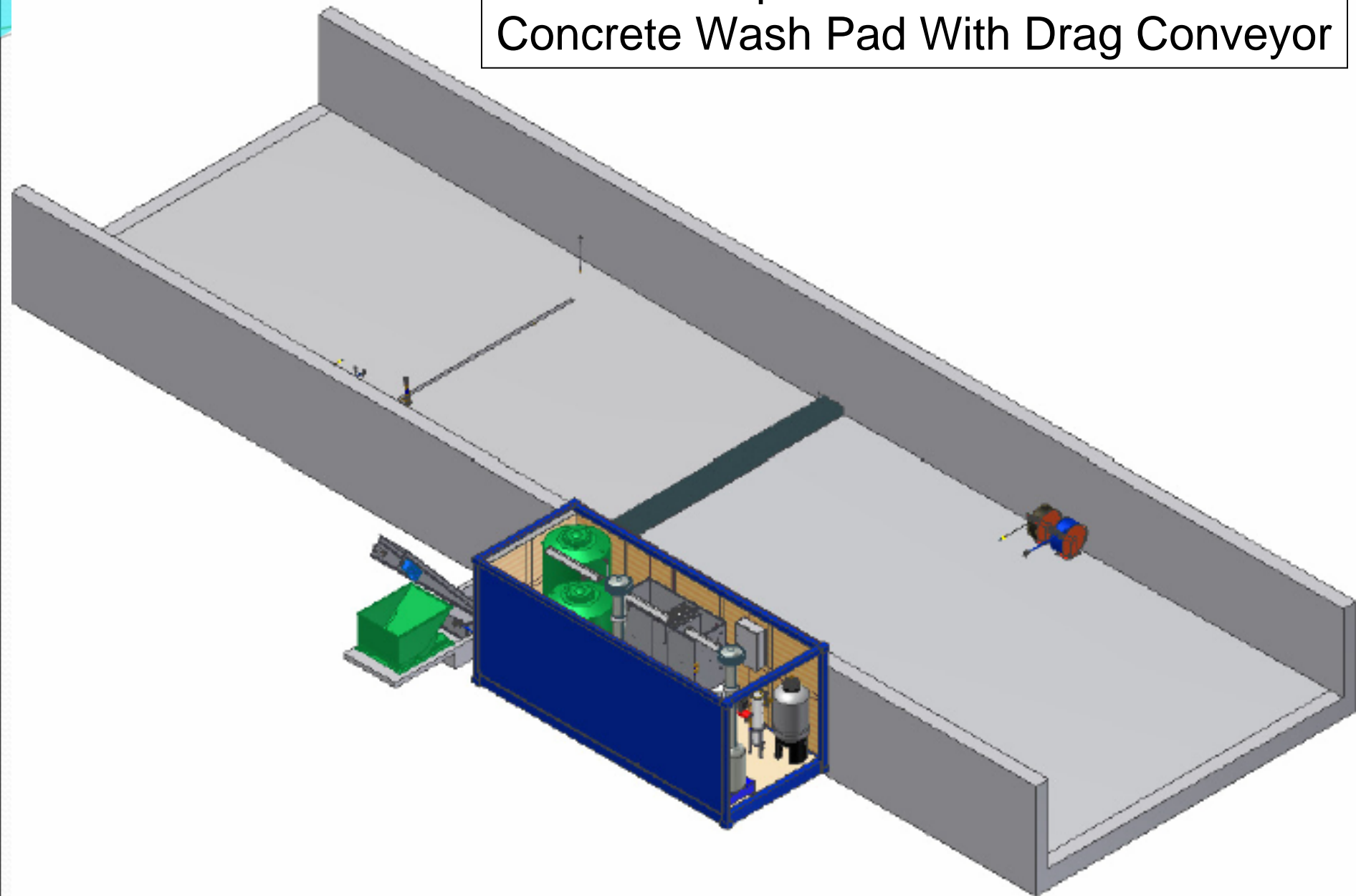
# Wash Pad Options

## Concrete Wash Pad With Skid Steer Cleanout



# Wash Pad Options

## Concrete Wash Pad With Drag Conveyor





# Wash Pad Options

## Concrete Wash Pads

### Pros

- Very flexible design and sizing options
- Very Heavy Duty
- Existing Slab rework may suffice
- Less Expensive than steel pads

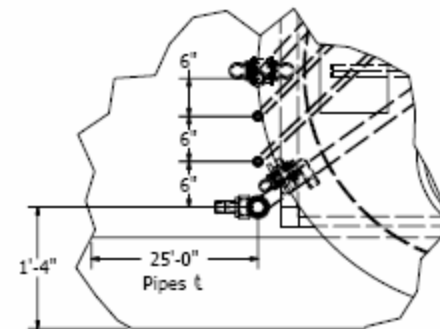
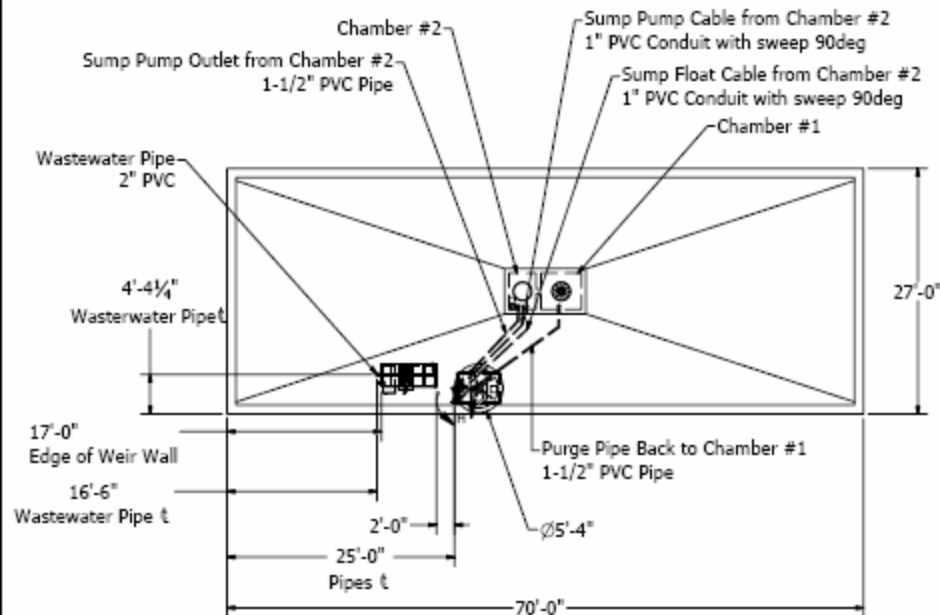
### Cons

- Monument – not able to relocate
- Excavation may be needed to install

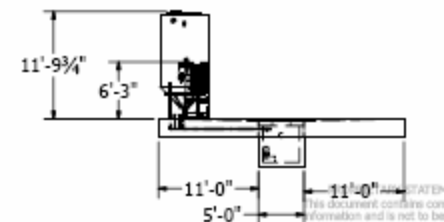
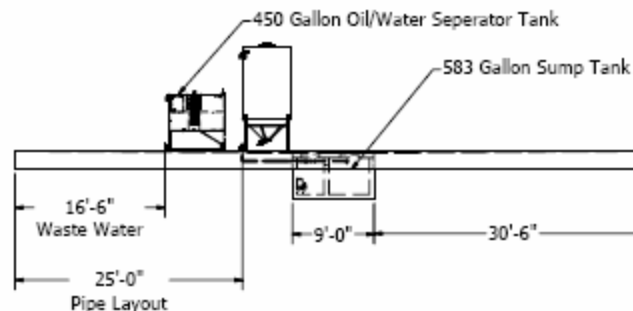


# Wash Water Filtration Options

## Pre Filter and Discharge to Sanitary Sewer

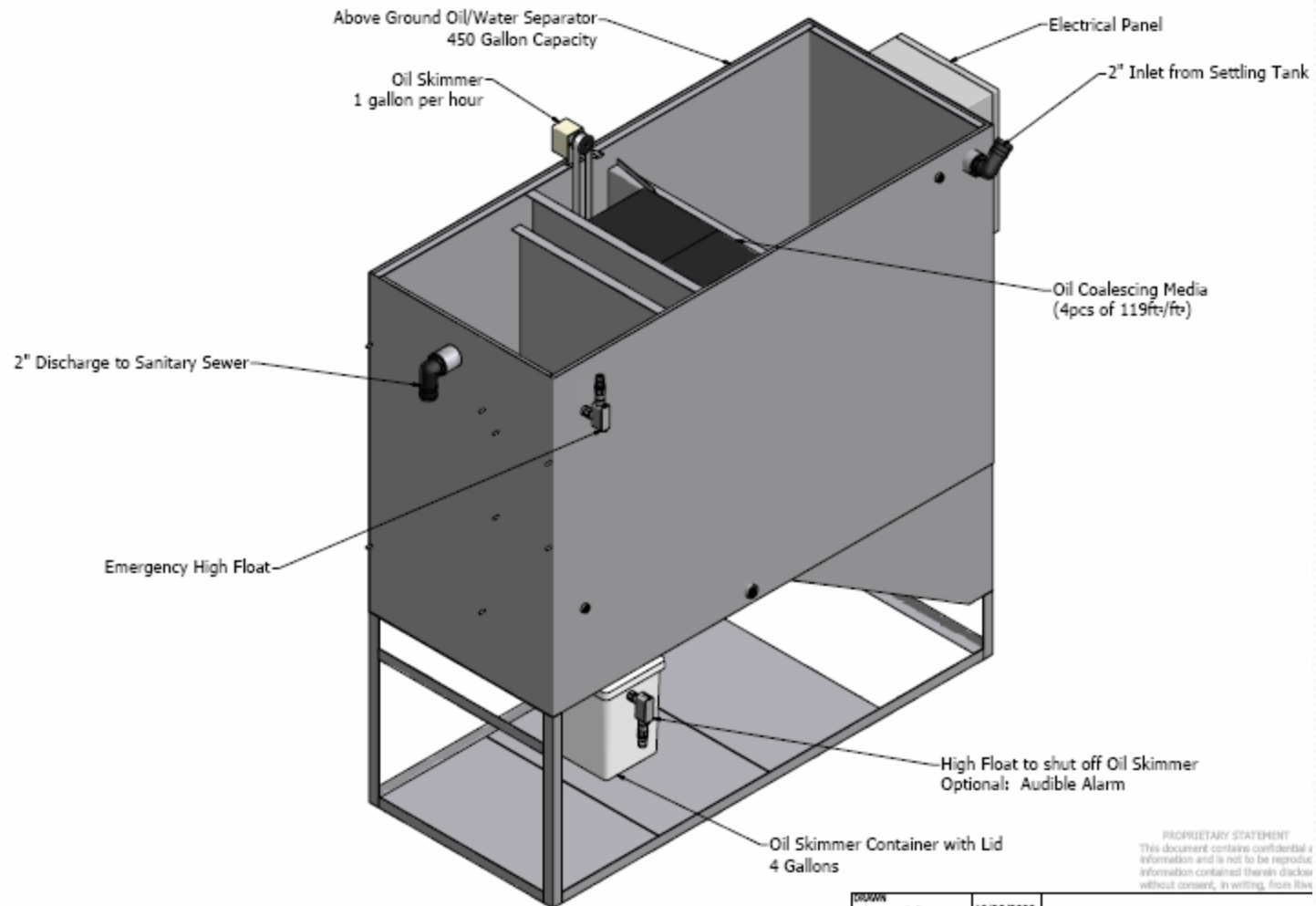


PIPE LOCATION  
DETAIL H  
SCALE 1/10



# Wash Water Filtration Options

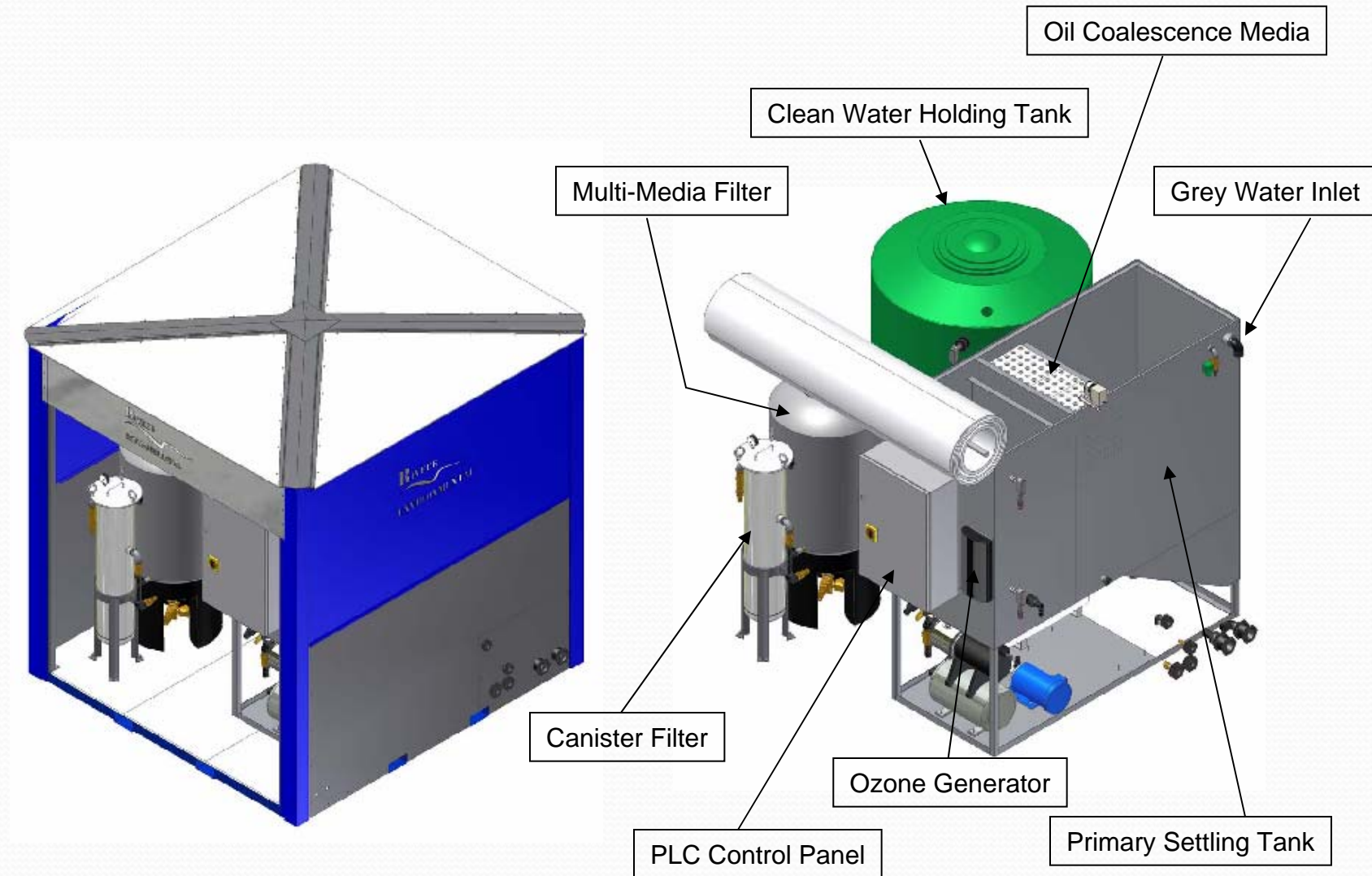
## Pre Filter and Discharge to Sanitary Sewer



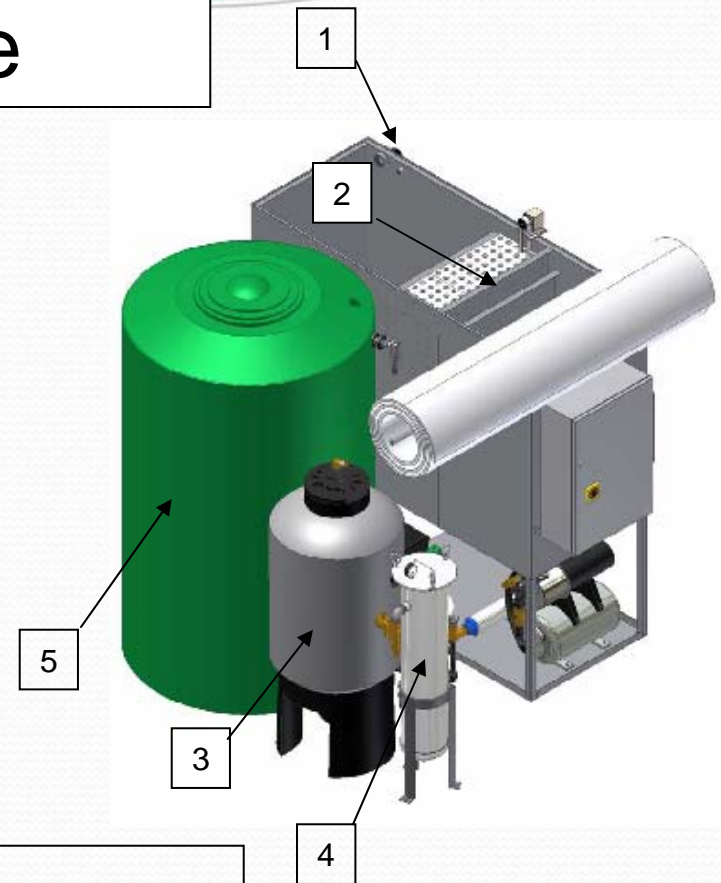
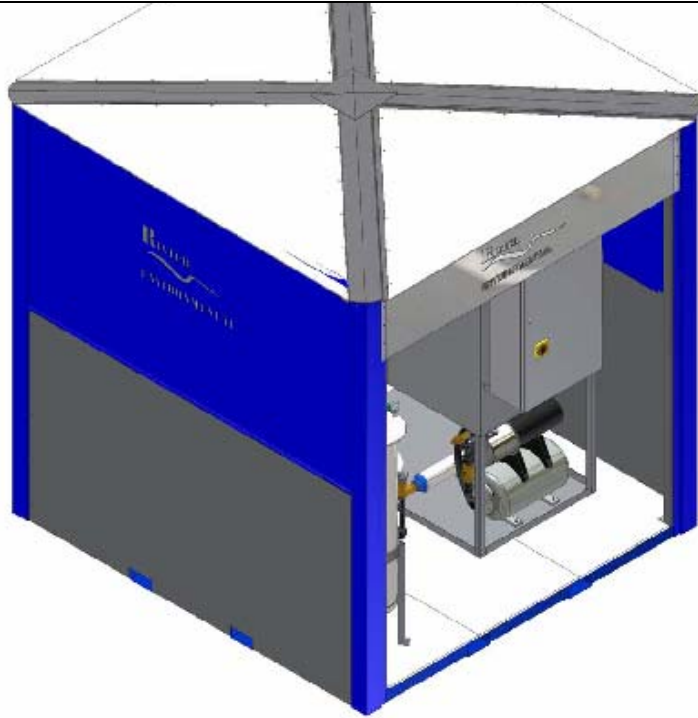
PROPRIETARY STATEMENT  
This document contains confidential  
information and is not to be reproduced  
without consent, in writing, from Rive



# Wash Water Filtration Options Reclaim and Recycle



# Wash Water Filtration Options Reclaim and Recycle



- 1 – Grey Water Inlet to Settling Tank
- 2 – Flow Through Oil Coalescer
- 3 – Pressurized Flow Through Multi-Media Filter
- 4 – Pressurized Flow Through Canister Filter
- 5 – Pressurized Flow To Clean Water Holding Tank



# Recycling Filtration Considerations

- Odor Control
  - Ozone
  - Bioremediation
  - Chemical
- Solids Settling
  - Mechanical
  - pH Injection
- Salt
  - Reverse Osmosis
  - Evaporation
  - Haul Off
- Oil/Grease
  - Coalescence