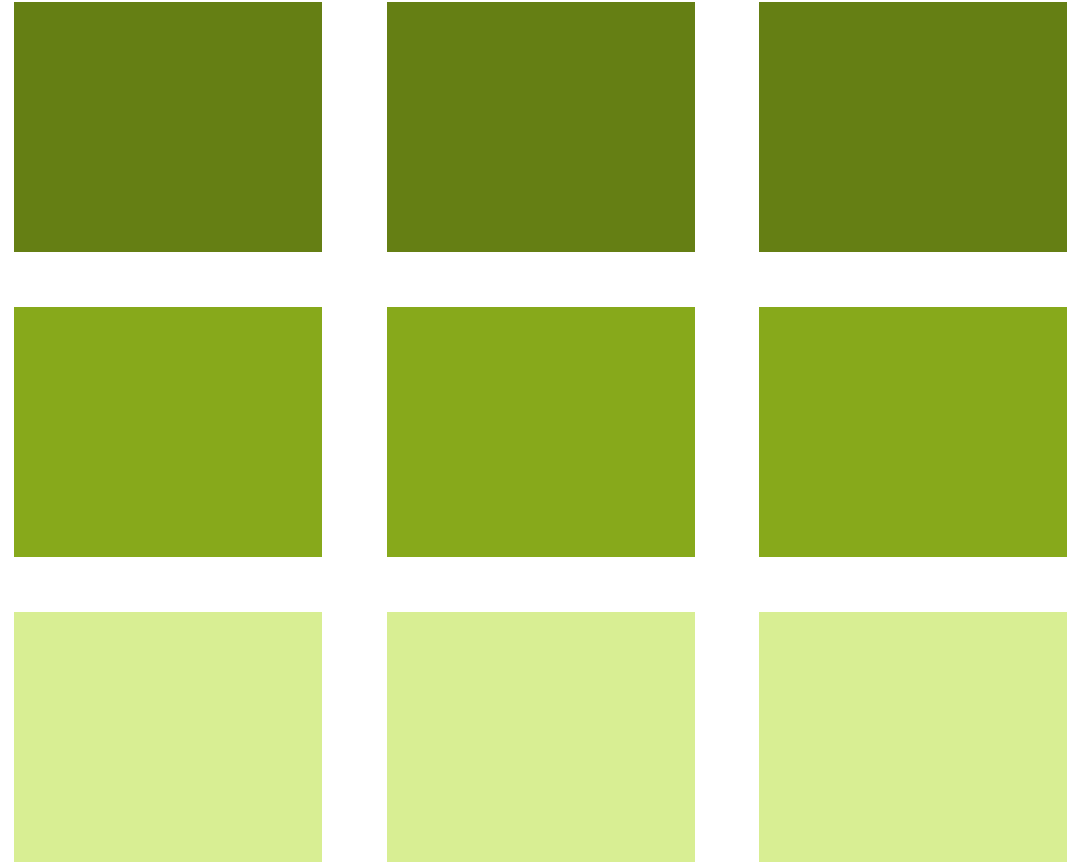




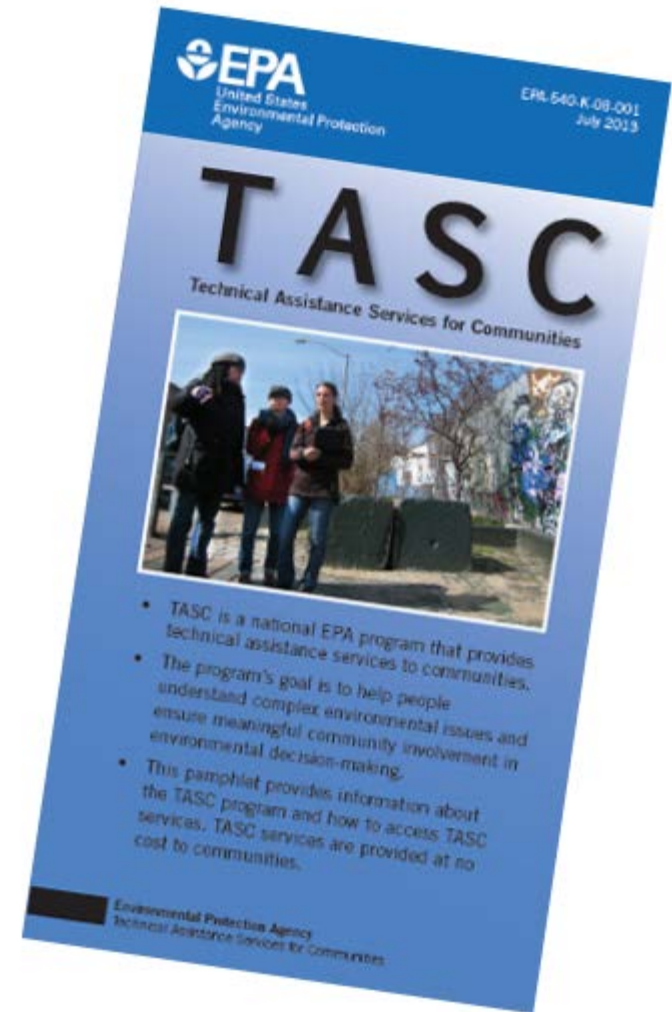
# TASC OVERVIEW

ROLLING KNOLLS LANDFILL  
OCTOBER 29, 2018



# TASC

- Technical Assistance Services for Communities (TASC)
- One of several EPA-sponsored technical assistance programs
- Provides non-advocacy, independent technical assistance





# TASC PROGRAM SERVICES

- Community trainings
- Reviews and explanations of technical information
- Educational presentations
- Technical Assistance Needs Assessments (TANAs)
- CAG formation support
- Meeting facilitation
- Outreach materials
- Superfund Job Training Initiative (SuperJTI)



# EXAMPLES OF TASC PRODUCTS

**Technical Assistance Services for Communities**  
**West Lake Landfill Superfund Site**  
 Fact Sheet - June 2015

**TASC Summary - Landfill Leachate at Bridgeton Landfill**

**Introduction**

This fact sheet provides information on the collection, pumping, sampling, treatment and disposal of landfill leachate (LCL) from the Bridgeton Landfill.

**What is landfill leachate?**

It is the liquid that drains or "leaches" from a landfill. It varies widely in composition, depending on the age of the landfill and the type of waste. It usually contains dissolved and suspended (solid) material. Disposal of landfill leachate requires a permit. It can contain various regulated substances.

**Leachate Collection**

The Bridgeton Landfill (also called the former Saffery Landfill) has a leachate collection system. The system captures rainwater and groundwater that flows through the landfill as well as liquids from decomposing wastes in the landfill.

**The May 2011 Leachate Land Report**  
<http://www.epa.gov/landfills/docs/leachate/051111.pdf>  
 shows that the LCS-30, LCS-33 and LCS-45 units contained less than 10 feet of leachate over the past year. Though there were no readings for LCS-27 since October 2014, leachate levels were greater than 10 feet for LCS-10, 28-4.

**U.S. Environmental Protection Agency**  
 Technical Assistance Services for Communities Act

The system pumps leachate from several locations, including the perimeter of the landfill, gas extraction and incinerator wells, trenches, horizontal drains and six leachate collection strips (LCS). The LCSs, which are located in the former quarry pits, extend down to near the base of the landfill (see Figure 1).

**What is a sump?**

A low space that collects liquids such as water or chemicals. A sump pump removes the liquid. A leachate sump on top of a sump pump provides access from the ground surface.

The Missouri Department of Natural Resources reported that Bridgeton Landfill pump leachate from the LCSs at a rate that keeps the height of leachate in the landfill at no more than 10 feet above the quarry floor. About half of the LCSs were able to do so during the past year. A subsurface smoldering event (a chemical reaction called pyrolysis, in which materials heat up and decompose) caused damage to some LCSs and/or the associated leachate monitoring devices. When too much leachate accumulates in the landfill, the potential for contamination to reach groundwater increases.

Many of the chemicals found in your home can harm your health if you breathe them or accidentally eat or drink them. They can also harm the environment or pollute drinking water if they are not thrown away correctly.

**Word Search**

Visible Organic Compounds (called VOCs) are small molecules they move easily into the air we breathe. VOCs can also move quickly into our water. Search up, down, forward, backward and on the diagonal to find the VOCs hidden below. Check off the VOCs once you find them to keep them from polluting the air and water.

Can you find the words on your personal copy from any of these 10 pages. Some clues are included. If so, you and your parents can safely dispose many chemicals and materials under a special collection day near you.

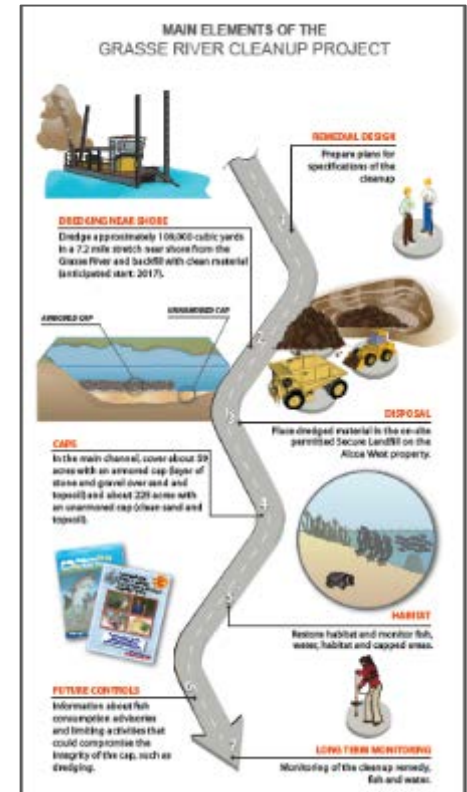
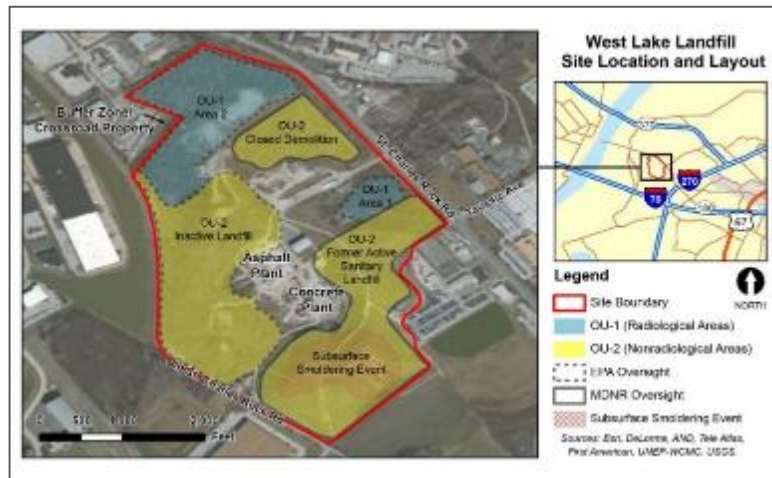
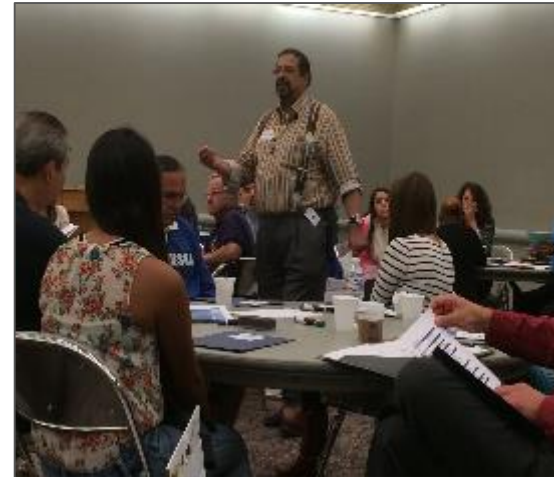
For a number of opening waste collection events, check out the TASC [www.dnr.org/landfills/landfills.html](http://www.dnr.org/landfills/landfills.html), website!

Below are some clues that you can bring to the collection day!

- Antacids, pills and Aspirin
- Foods
- Household cleaners
- Pesticides
- Medicines

**PAINT**  
**NAIL POLISH**  
**PESTICIDES**  
**EXHAUST**  
**GASOLINE**  
**FURNITURE**  
**BLEACH**

B E C D H O I S X S O Y T R S V  
 F P R K N T T M M S T F P  
 L A R N U Z Z Y J A D V S  
 L S K D P S A A U U O A K  
 O W C R H U T T F Y A N X D  
 R Y D Q U L Z K M A H Q V U  
 T P R O N V C T T T M X V T  
 T R H G T P D T M N R Y T  
 K S D V U X A E J R O P S L  
 T O V Y K A T T V R A S V O  
 A A K K X Z J S S U M U Q U  
 C Y M U O Z S U M U C V F  
 P O M V T T K K T H L T X  
 S E L U A G L E K T N S D  
 T R O V T M R P L T N T T

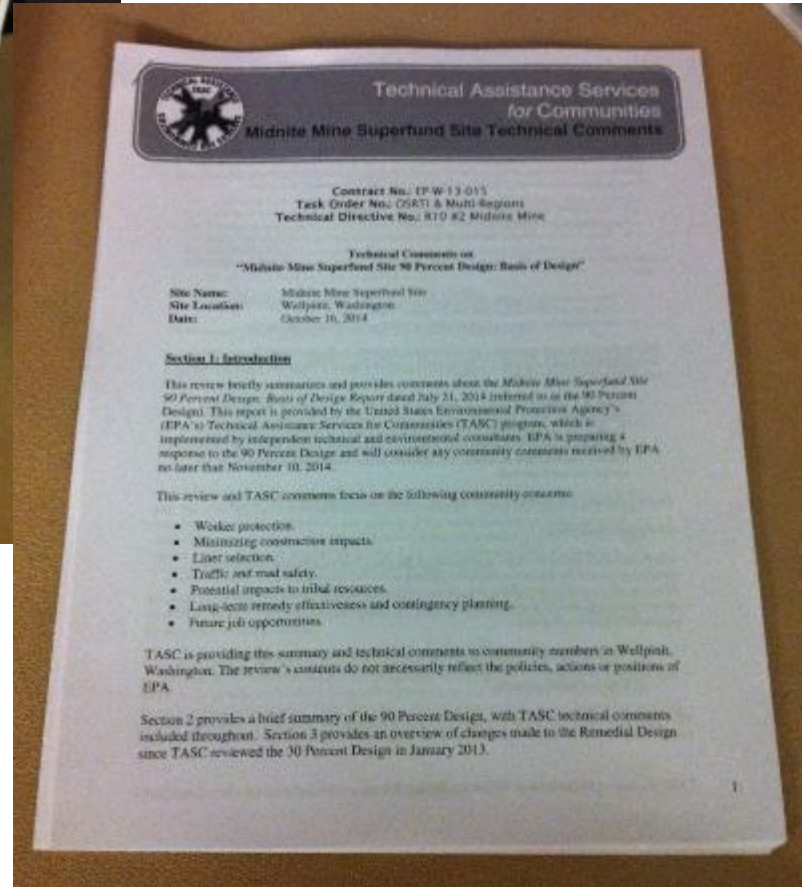






BEFORE

AFTER



TECHNICAL  
DOCUMENT  
REVIEW AND  
SUMMARY

# Questions?

*This presentation is funded by EPA's TASC program – its contents do not necessarily reflect the policies, actions or positions of EPA*

ADOBE STOCK IMAGE NOTICE

This document contains Adobe Stock images that may not be used elsewhere without permission from [Adobe Stock](#). Readers may not access or download Adobe Stock images from this document for any purpose and must comply with [Adobe Stock's Terms of Use](#), which require users to obtain a license to the work.

