

Helen Fenske Visitors Center
New Vernon, New Jersey
September 17, 2018

Rolling Knolls Superfund Site Community Advisory Group (CAG) Information Session

Overview

Superfund Process

Rolling Knolls Site Status

Community Advisory Group
Discussion Resources

A thin vertical black line is positioned to the left of the title text.

What is Superfund?

Superfund History

- **CERCLA (Superfund)**
 - Comprehensive Environmental Response, Compensation, and Liability Act, as amended
 - Federal authority to respond to releases that may endanger public health or the environment
- **National Oil and Hazardous Substances Pollution Contingency Plan (NCP)**
 - Regulation applicable to all federal agencies involved in responding to hazardous substance releases



Goals of Superfund

- **Protect human health and the environment by cleaning up polluted sites**
- **Make responsible parties pay for cleanup work**
- **Involve communities in the Superfund process**
- **Return Superfund sites to productive use**

Types of Responses

- **EPA uses two types of responses to address polluted sites:**
 - Removal actions (short term)
 - Address emergencies and immediate threats
 - Remedial actions (long term)
 - Address complex sites

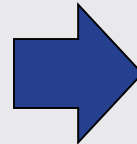
Remedial Actions

- Address contamination directly related to releases or threatened releases of hazardous substances that may endanger public health or the environment
- Long-term actions



Source: EPA

Before



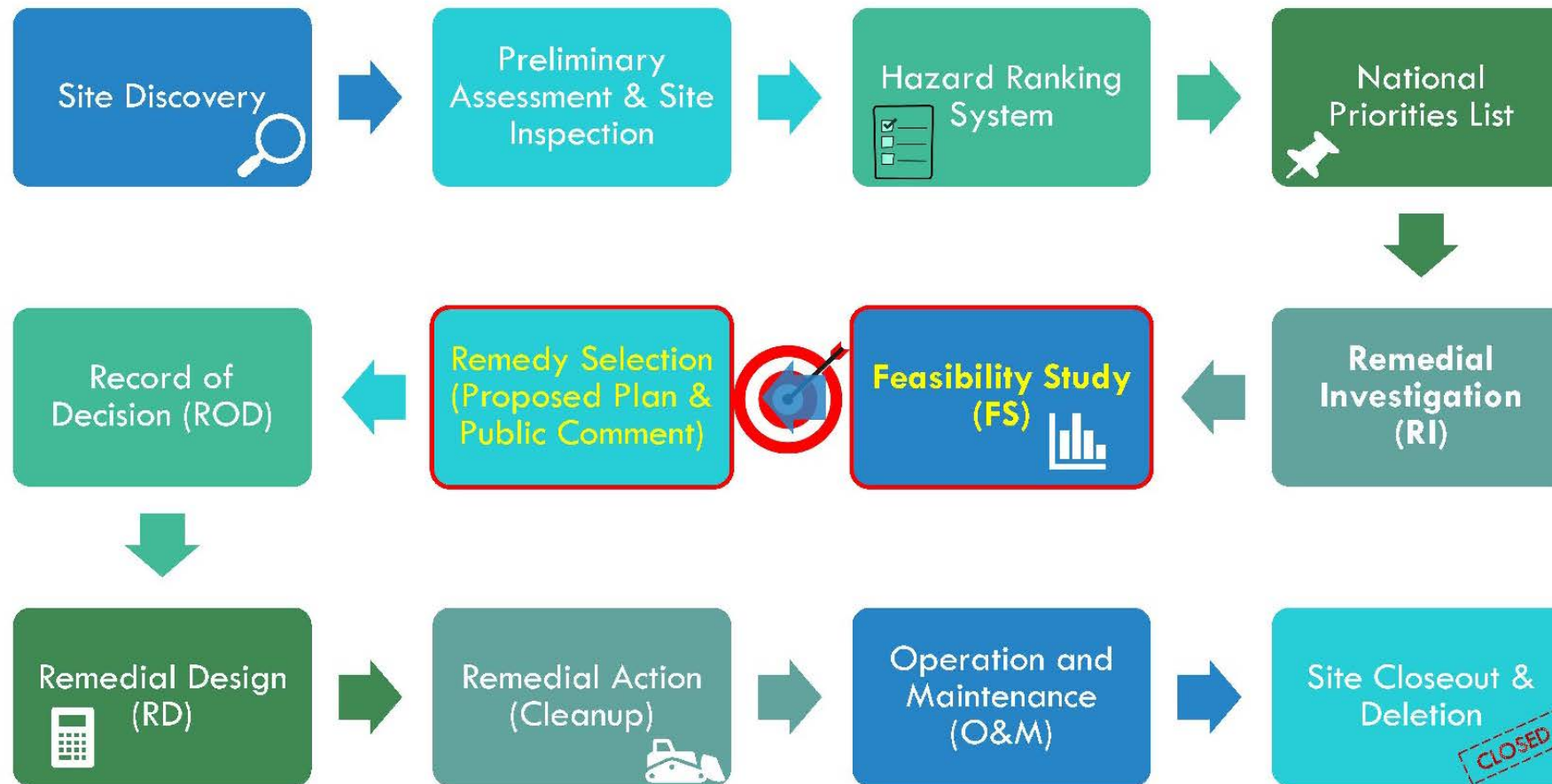
Source: EPA

After

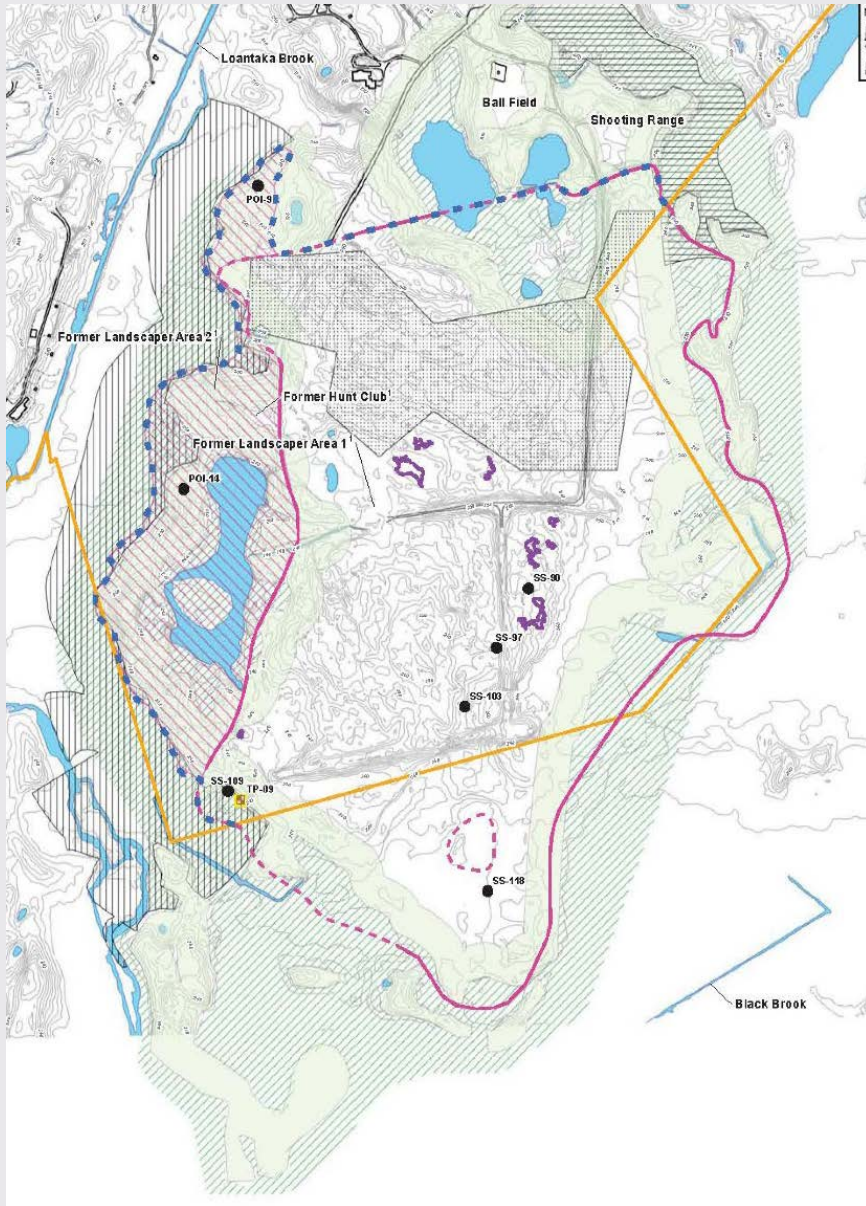
Rolling Knolls Landfill Site

- Size: ~ 200 acres
- History: Private landfill operations contaminated soils, sediment, surface water, groundwater
- Property Ownership: Private and federal government land owners
- Cleanup Status: Superfund Remedial Investigation/ Feasibility Study underway

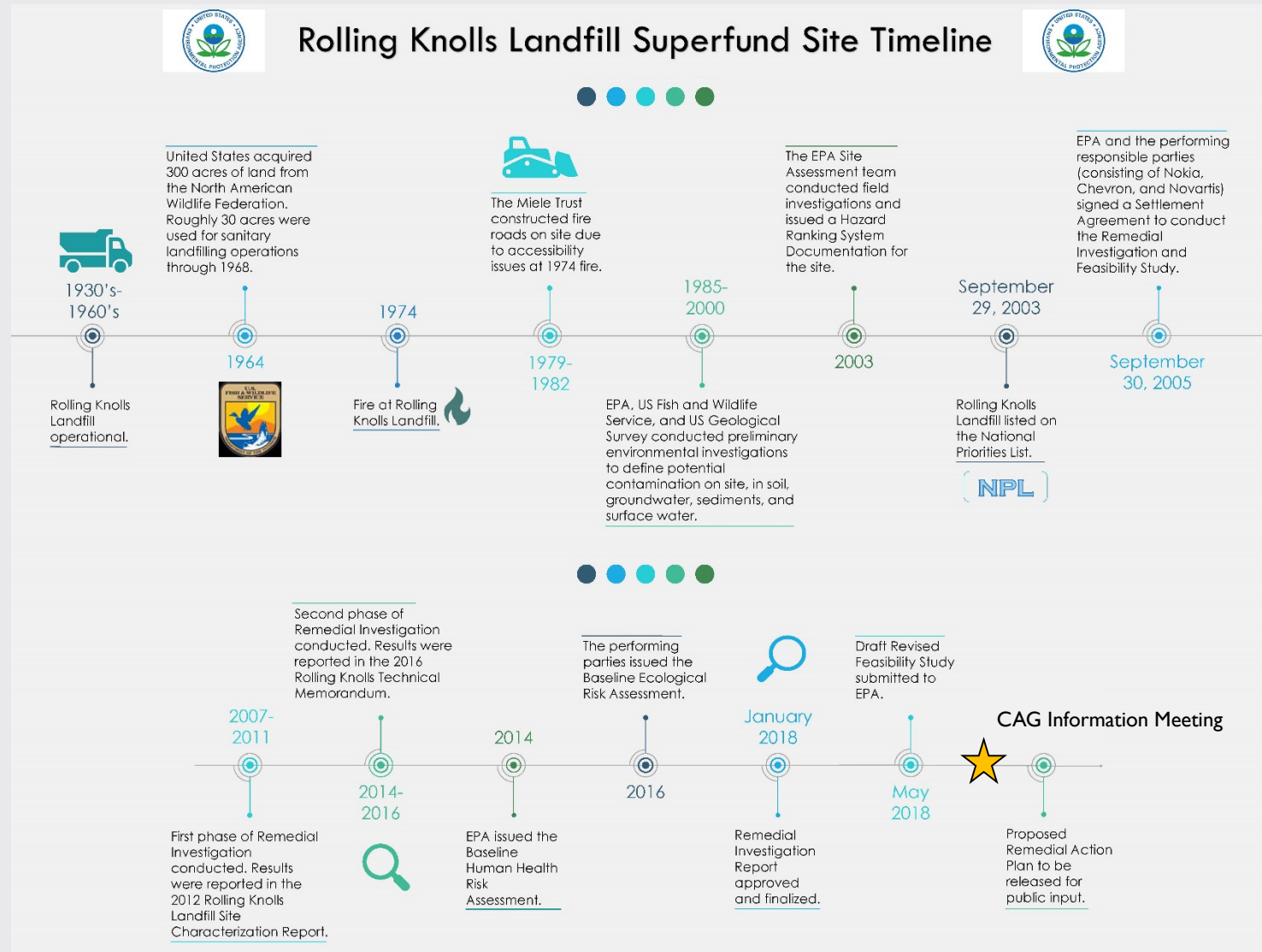
Superfund Remedial Process



Rolling Knolls Landfill Site



Superfund Process to Date



Community Interests and Concerns to Date Regarding Potential Remedial Alternatives

(Based on EPA Public Availability Sessions held June 4, 2018)

- Preference for limited action and disturbance
- Prioritize cleanup activities that minimize truck traffic
- Minimize drainage alteration and flooding impacts during and after cleanup activities

Community Advisory Group Discussion

- What is a Community Advisory Group (CAG)?
- Steps for forming a CAG.
- Roles and responsibilities of CAG members.
- Roles and responsibilities of EPA.

What is a Community Advisory Group (CAG)?

1

Informal organization
that facilitates
communication
between EPA and
community at
Superfund sites

2

Brings together
diverse
stakeholders for
meaningful
discussions

CAG basics

- Informal organization
- Not a decision-making body, but do give community members a voice
- Provide community recommendations on cleanup decisions
- Typically consist of one member from each organization, interest group or viewpoint



CAG Membership

Members may include:

- Residents or homeowners near site
- Local professionals
- Native American tribes and communities
- Minority and low-income groups
- Environmental or public interest groups
- State and/or local government representatives
- Facility owners
- Local business community members

CAG Keys to Success

- Participation by all stakeholder groups within a community.
- All viewpoints are considered.
- Patience and persistence.

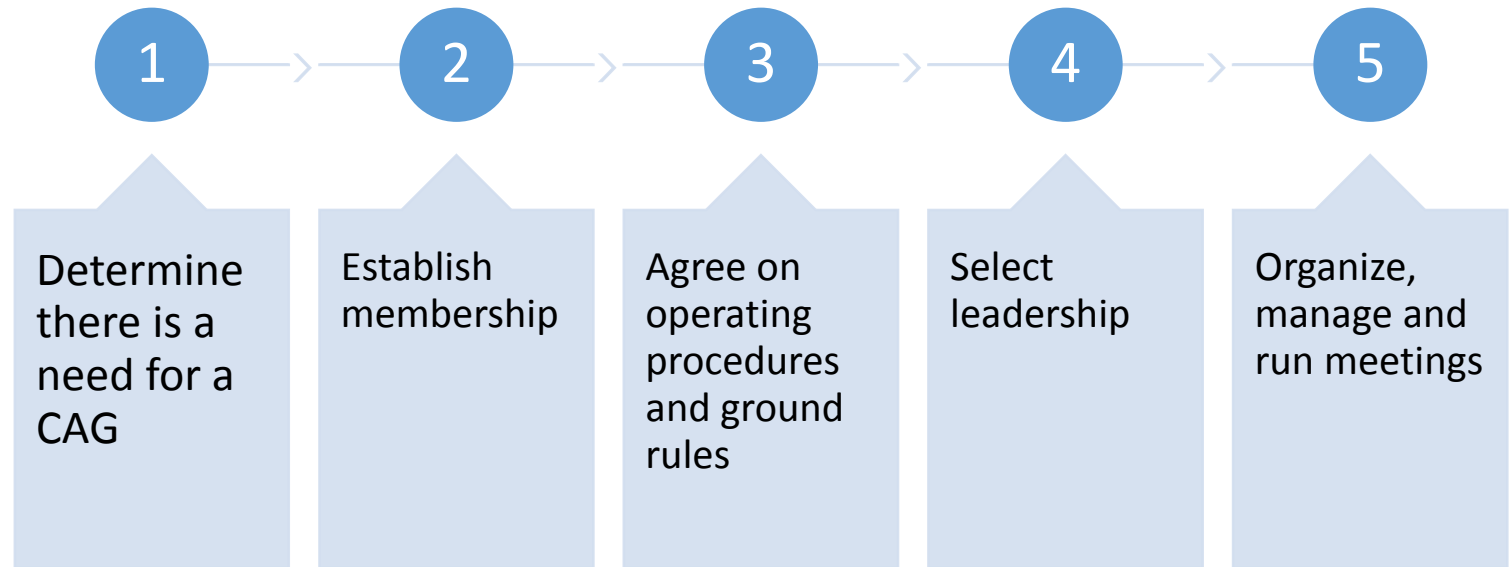
Member roles and responsibilities

Attend	Attend meetings
Represent	Represent views of the community
Express	Express community preferences
Review	Review technical information
Disseminate	Disseminate information about site to community members
Work	Work with CAG members to reach agreement when needed

EPA roles and responsibilities

Attend	Attend meetings to provide information and technical expertise
Discuss	Discuss issues related to Superfund actions
Listen and respond	Listen and respond to CAG members' questions and concerns
Provide	Provide training for CAG members, as appropriate
Assist	Assist with logistical and administrative support

Steps for forming a CAG



Determining Need for a CAG

Forming a CAG can be helpful at communities:

- That lack existing community groups.
- With competing community groups.
- With environmental justice concerns.
- With differing and diverse community views.

Facilitation for a CAG

- A neutral facilitator does not have a stake in the outcome, is impartial, and treats all parties fairly.
- A neutral facilitator can help a CAG
 - Develop mission statement, bylaws and operating procedures
 - Establish member roles and responsibilities
 - Form a leadership council
 - Prepare meeting agendas
 - Ensure meetings are productive and run smoothly
 - Come to agreement when needed

Determining CAG Membership

- Screening Panels
- Existing Group
- Core Group
- Self-Selecting Group

EPA Technical Assistance Resources

- Conflict Prevention and Resolution Center (CPRPC)
- Technical Assistance Grants (TAG)
- Technical Assistance Services to Communities (TASC)

Understanding Technical Assistance

Types of Technical Assistance:

◆	Technical advisors
◆	Training
◆	Facilitation
◆	Dispute resolution
◆	Other support

Where to go for Technical Assistance

CRPC	Conflict Prevention and Resolution Center
TASC	Technical Assistance Services for Communities
TAG	Technical Assistance Grants
CIU	Community Involvement University

Conflict Prevention and Resolution Center (CRPC)

- Training on alternative dispute resolution.
- Third party, neutral facilitation.
- Mediation.

Technical Assistance Grants (TAGs)

- Provide funding to community groups for a technical advisor to explain technical reports and proposed cleanup proposals and decisions
- Help communities participate in Superfund process
- Initial grant up to \$50,000 for community groups involved with the site

Technical Assistance Services for Communities (TASC)

- Community training.
- Education presentations.
- Technical assistance needs assessment (TANA).
- Reviewing and explaining technical information.
- Help with forming CAGs.
- Facilitating community meetings.
- Developing information materials for communities.

Contact Info:

Pat Seppi

Community Involvement Coordinator

EPA Region 2

212-637-3679 | seppi.pat@epa.gov

Matt Robbie

Facilitator, Skeo

802-231-3132 | mrobbie@skeo.com