

Legend
Benzo(a)pyrene Concentrations
Sediment
▲ Less than RDC
▲ Exceeds RDC (0.5 ppm)
▲ Exceeds NRDC (2 ppm)
Soil
● Less than RDC
● Exceeds RDC (0.5 ppm)
● Exceeds NRDC (2 ppm)
Other Features
— Edge of Landfilled Wastes Observed During Test Pit Activities (dashed where approximate)
— Great Swamp National Wildlife Refuge Property Boundary
▨ Waste and Debris Observed on Ground Surface But Not Anticipated to be Below Ground Surface

Notes:
ppm - parts per million

RDC – New Jersey Residential Direct Contact Soil Remediation Standard.

NRDC – New Jersey Non-Residential Direct Contact Soil Remediation Standard.

Results of certain sediment samples are included where those sediment samples were obtained to help in delineation of constituents in soil.

Aerial imagery accessed via ArcGIS Online and provided by the United States Department of Agriculture on 28 Sep 2017. Image is dated 31 July 2015.

5002500500 Feet

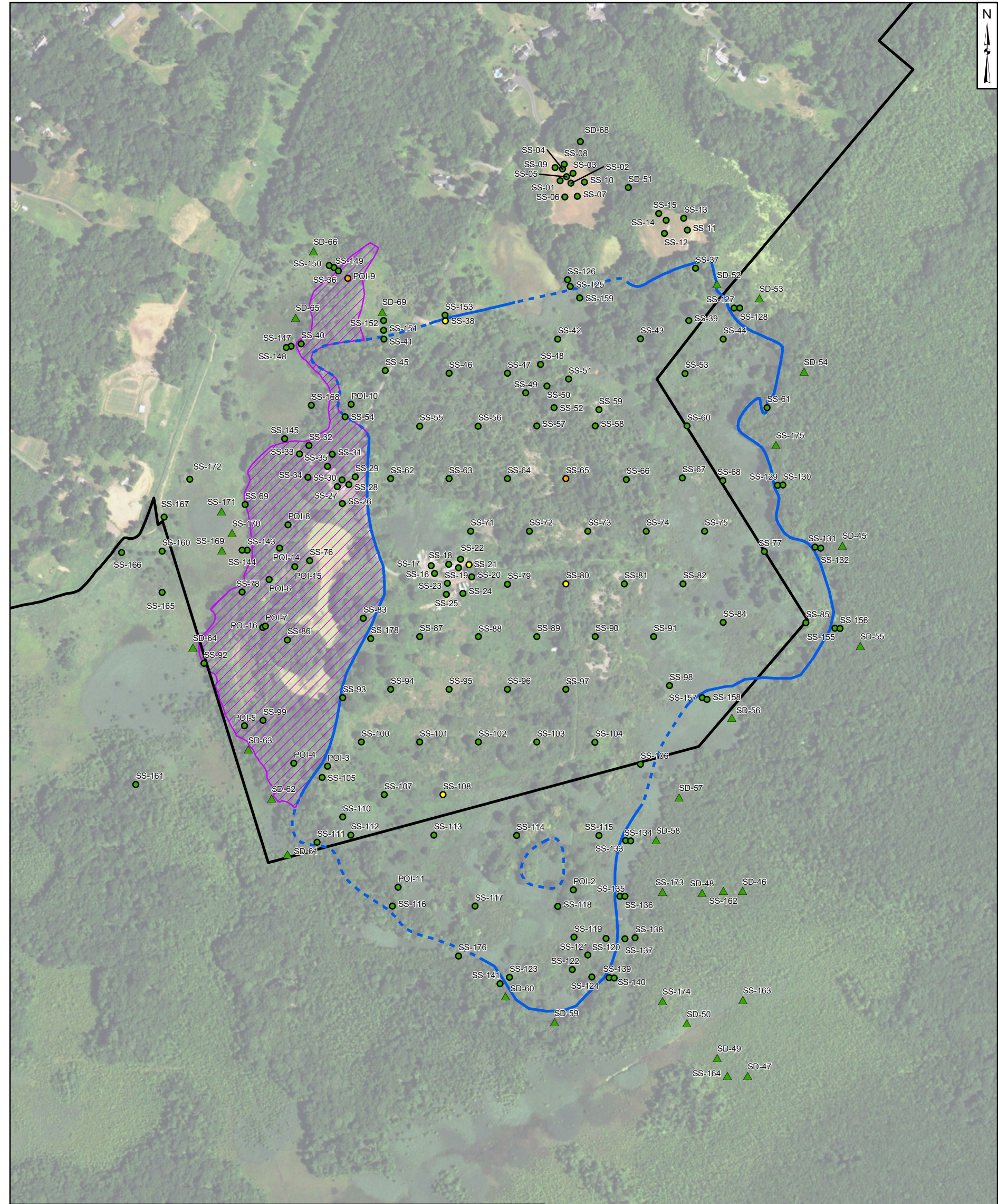
Benzo(a)pyrene Concentrations in Surface Soil
Rolling Knolls Landfill Superfund Site
Chatham, New Jersey

Geosyntec
consultants

Princeton, New Jersey

April 2017

Figure
C-1a



Legend
Benzo(b)fluoranthene Concentrations
Sediment
▲ Less than RDC
▲ Exceeds RDC (5 ppm)
▲ Exceeds NRDC (17 ppm)
Soil
● Less than RDC
● Exceeds RDC (5 ppm)
● Exceeds NRDC (17 ppm)
Other Features
— Edge of Landfilled Wastes Observed During Test Pit Activities (dashed where approximate)
— Great Swamp National Wildlife Refuge Property Boundary
▨ Waste and Debris Observed on Ground Surface But Not Anticipated to be Below Ground Surface

Notes:
ppm - parts per million

RDC – New Jersey Residential Direct Contact Soil Remediation Standard.

NRDC – New Jersey Non-Residential Direct Contact Soil Remediation Standard.

Results of certain sediment samples are included where those sediment samples were obtained to help in delineation of constituents in soil.

Aerial imagery accessed via ArcGIS Online and provided by the United States Department of Agriculture on 29 Sep 2017. Image is dated 31 July 2015.

5002500500 Feet

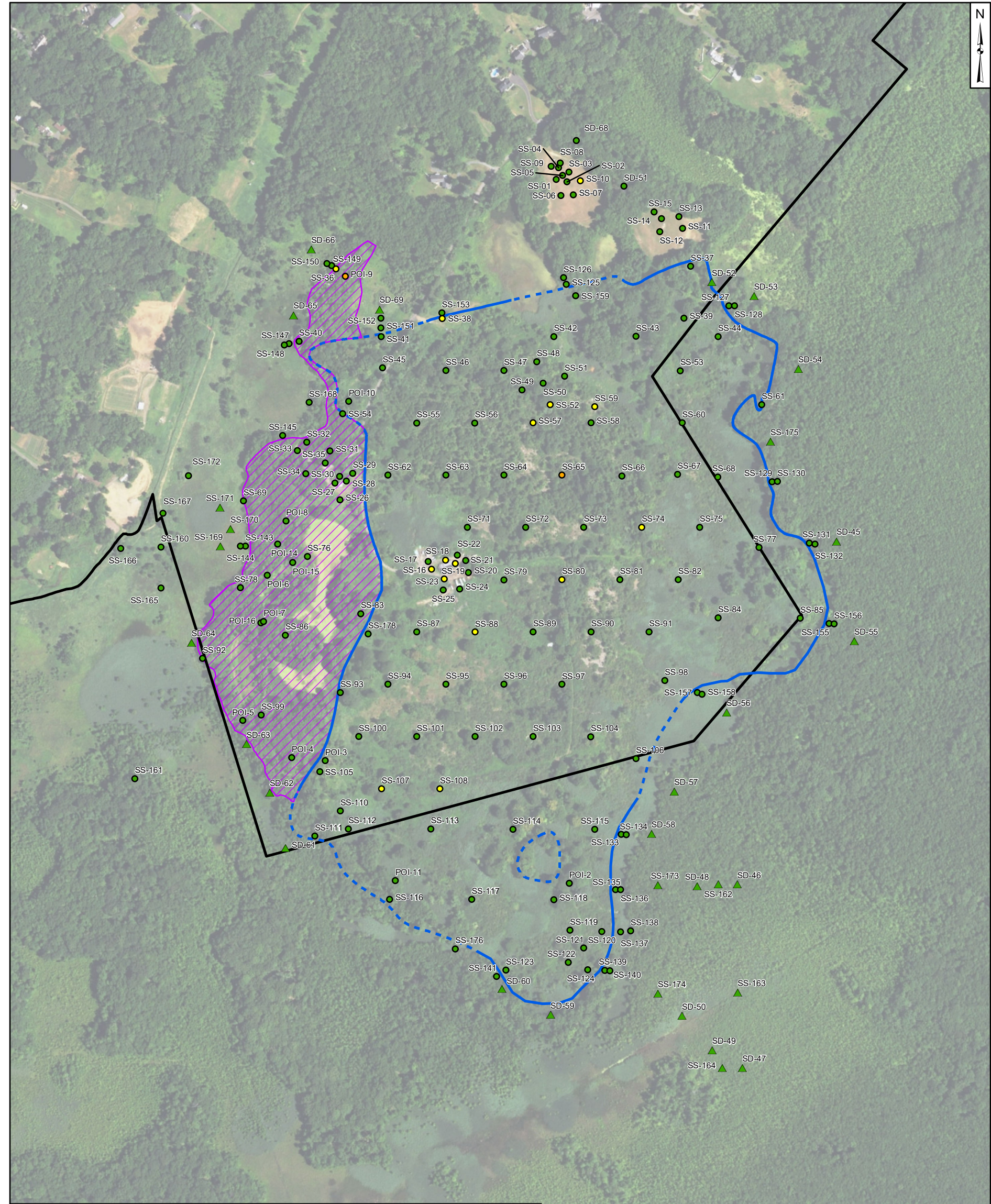
**Benzo(b)fluoranthene Concentrations
in Surface Soil**
Rolling Knolls Landfill Superfund Site
Chatham, New Jersey

Geosyntec
consultants

Princeton, New Jersey

April 2017

Figure
C-1b



Legend
Dibenz(a,h)anthracene Concentrations
Sediment
▲ Less than RDC
▲ Exceeds RDC (0.5 ppm)
▲ Exceeds NRDC (2 ppm)
Soil
● Less than RDC
● Exceeds RDC (0.5 ppm)
● Exceeds NRDC (2 ppm)
Other Features
— Edge of Landfilled Wastes Observed During Test Pit Activities (dashed where approximate)
— Great Swamp National Wildlife Refuge Property Boundary
▨ Waste and Debris Observed on Ground Surface But Not Anticipated to be Below Ground Surface

Notes:
ppm - parts per million

RDC – New Jersey Residential Direct Contact Soil Remediation Standard.

NRDC – New Jersey Non-Residential Direct Contact Soil Remediation Standard.

Results of certain sediment samples are included where those sediment samples were obtained to help in delineation of constituents in soil.

Aerial imagery accessed via ArcGIS Online and provided by the United States Department of Agriculture on 29 Sep 2017. Image is dated 31 July 2015.

5002500500 Feet

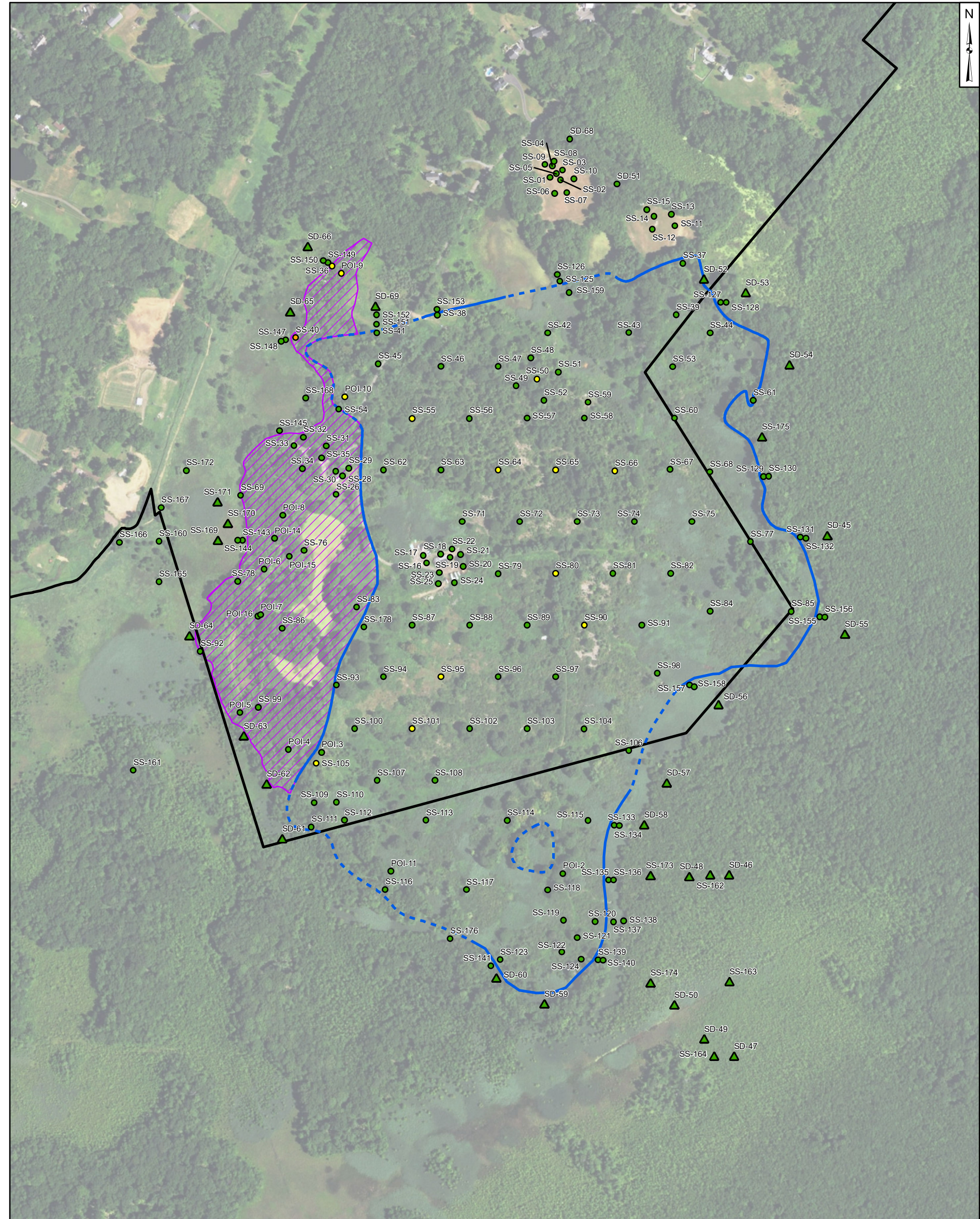
**Dibenz(a,h)anthracene Concentrations
in Surface Soil**
Rolling Knolls Landfill Superfund Site
Chatham, New Jersey

Geosyntec
consultants

Princeton, New Jersey

April 2017

Figure
C-1c



Legend
Chlordane (cis) Concentrations
Sediment
▲ Less than RDC
▲ Exceeds RDC (0.2 ppm)
▲ Exceeds NRDC (1 ppm)
Other Features
— Edge of Landfilled Wastes Observed During Test Pit Activities (dashed where approximate)
— Great Swamp National Wildlife Refuge Property Boundary
Waste and Debris Observed on Ground Surface But Not Anticipated to be Below Ground Surface

Soil
● Less than RDC
● Exceeds RDC (0.2 ppm)
● Exceeds NRDC (1 ppm)

Notes:
ppm - parts per million

RDC – New Jersey Residential Direct Contact Soil Remediation Standard.

NRDC – New Jersey Non-Residential Direct Contact Soil Remediation Standard.

Results of certain sediment samples are included where those sediment samples were obtained to help in delineation of constituents in soil.

Aerial imagery accessed via ArcGIS Online and provided by the United States Department of Agriculture on 17 Jan 2017. Image is dated 31 July 2015.

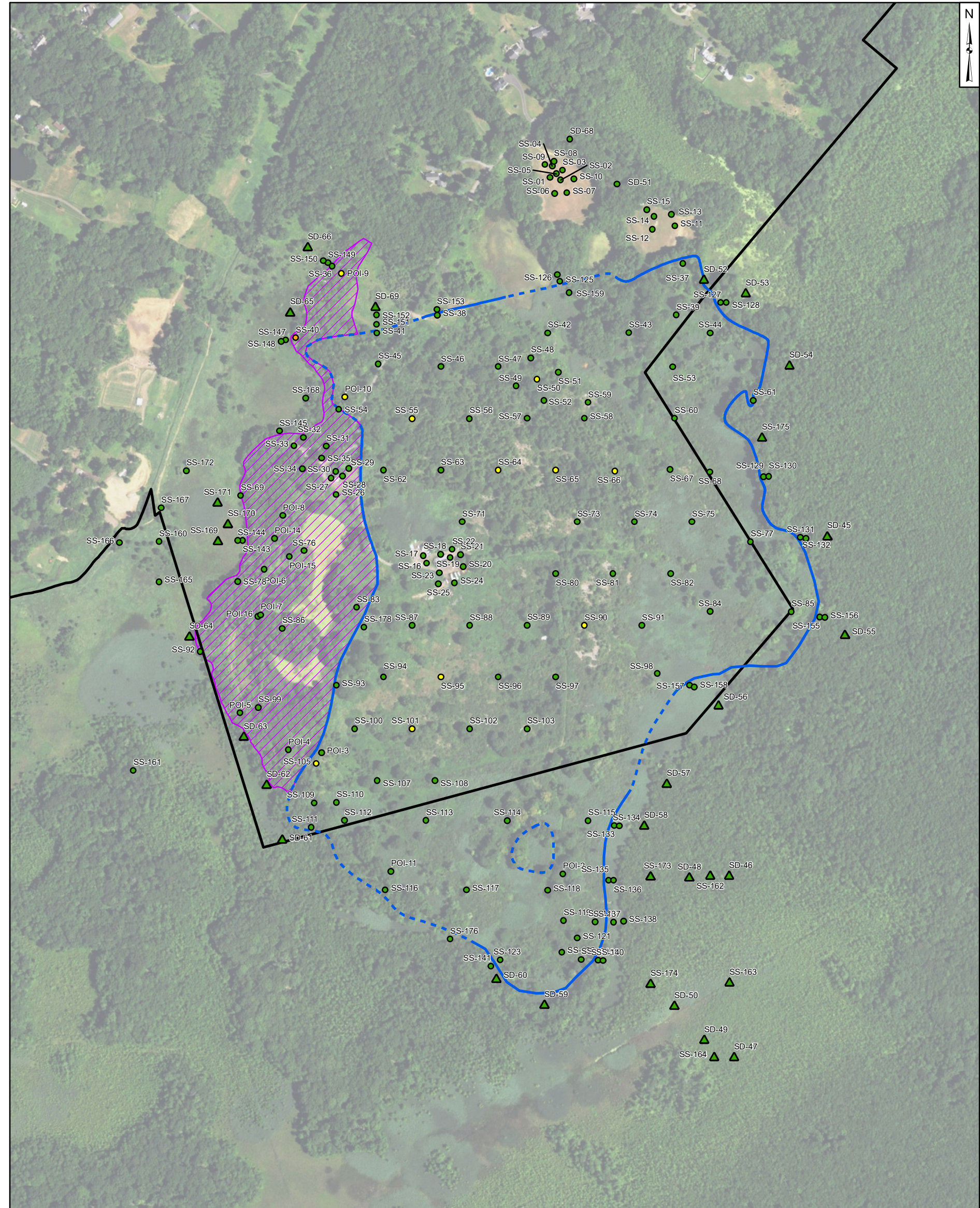
500 250 0 500 Feet

Chlordane (cis) Concentrations in Surface Soil
Rolling Knolls Landfill Superfund Site
Chatham, New Jersey

Geosyntec
consultants

Princeton, New Jersey November 2016

Figure
C-2



Legend

Chlordane (trans) Concentrations

Sediment

Soil

Less than RDC

Exceeds RDC (0.2 ppm)

Exceeds NRDC (1 ppm)

Less than RDC

Exceeds RDC (0.2 ppm)

Exceeds NRDC (1 ppm)

Other Features

Edge of Landfilled Wastes Observed During Test Pit Activities (dashed where approximate)

Great Swamp National Wildlife Refuge Property Boundary

Waste and Debris Observed on Ground Surface But Not Anticipated to be Below Ground Surface

Notes:
ppm - parts per million

RDC – New Jersey Residential Direct Contact Soil Remediation Standard.

NRDC – New Jersey Non-Residential Direct Contact Soil Remediation Standard.

Results of certain sediment samples are included where those sediment samples were obtained to help in delineation of constituents in soil.

Aerial imagery accessed via ArcGIS Online and provided by the United States Department of Agriculture on 17 Jan 2017. Image is dated 31 July 2015.

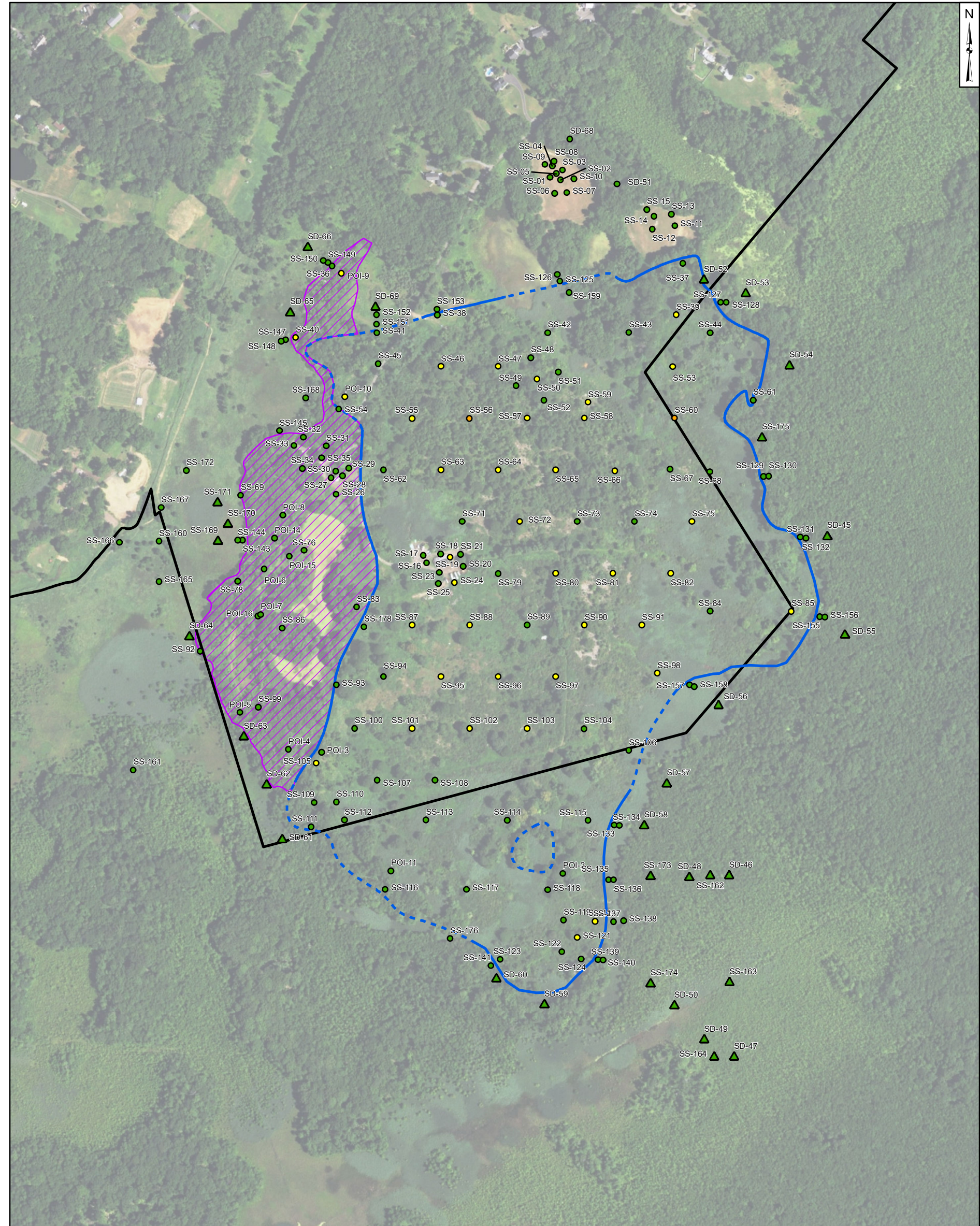
5002500500 Feet

Chlordane (trans) Concentrations in Surface Soil
Rolling Knolls Landfill Superfund Site
Chatham, New Jersey

Figure
C-3

Princeton, New Jersey

November 2016



Legend

Dieldrin Concentrations

Sediment

Less than RDC

Exceeds RDC (0.04 ppm)

Exceeds NRDC (0.2 ppm)

Soil

Less than RDC

Exceeds RDC (0.04 ppm)

Exceeds NRDC (0.2 ppm)

Other Features

Edge of Landfilled Wastes Observed During Test Pit Activities (dashed where approximate)

Great Swamp National Wildlife Refuge Property Boundary

Waste and Debris Observed on Ground Surface But Not Anticipated to be Below Ground Surface

Notes:

ppm - parts per million

RDC – New Jersey Residential Direct Contact Soil Remediation Standard.

NRDC – New Jersey Non-Residential Direct Contact Soil Remediation Standard.

Results of certain sediment samples are included where those sediment samples were obtained to help in delineation of constituents in soil.

Aerial imagery accessed via ArcGIS Online and provided by the United States Department of Agriculture on 17 Jan 2017. Image is dated 31 July 2015.

5002500500 Feet

Dieldrin Concentrations in Surface Soil

Rolling Knolls Landfill Superfund Site

Chatham, New Jersey

Geosyntec

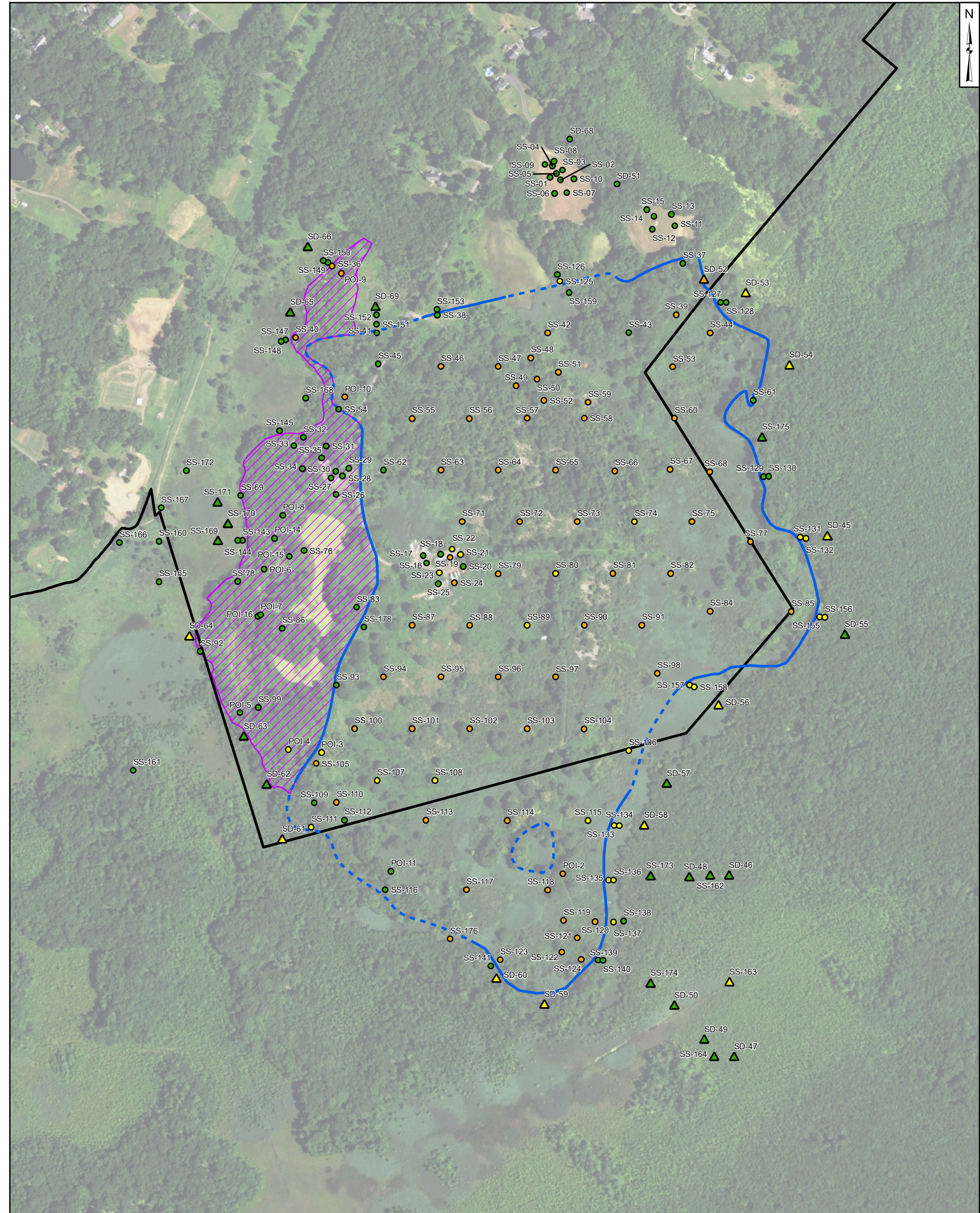
consultants

Princeton, New Jersey

November 2016

Figure

C-4



Legend
Total PCB Concentrations
Sediment
▲ Less than RDC
▲ Exceeds RDC (0.2 ppm)
▲ Exceeds NRDC (1 ppm)
Soil
● Less than RDC
● Exceeds RDC (0.2 ppm)
● Exceeds NRDC (1 ppm)
Other Features
— Edge of Landfilled Wastes Observed During Test Pit Activities (dashed where approximate)
— Great Swamp National Wildlife Refuge Property Boundary
Waste and Debris Observed on Ground Surface But Not Anticipated to be Below Ground Surface

Notes:
ppm - parts per million

RDC – New Jersey Residential Direct Contact Soil Remediation Standard.

NRDC – New Jersey Non-Residential Direct Contact Soil Remediation Standard.

Results of certain sediment samples are included where those sediment samples were obtained to help in delineation of constituents in soil.

Aerial imagery accessed via ArcGIS Online and provided by the United States Department of Agriculture on 17 Jan 2017. Image is dated 31 July 2015.

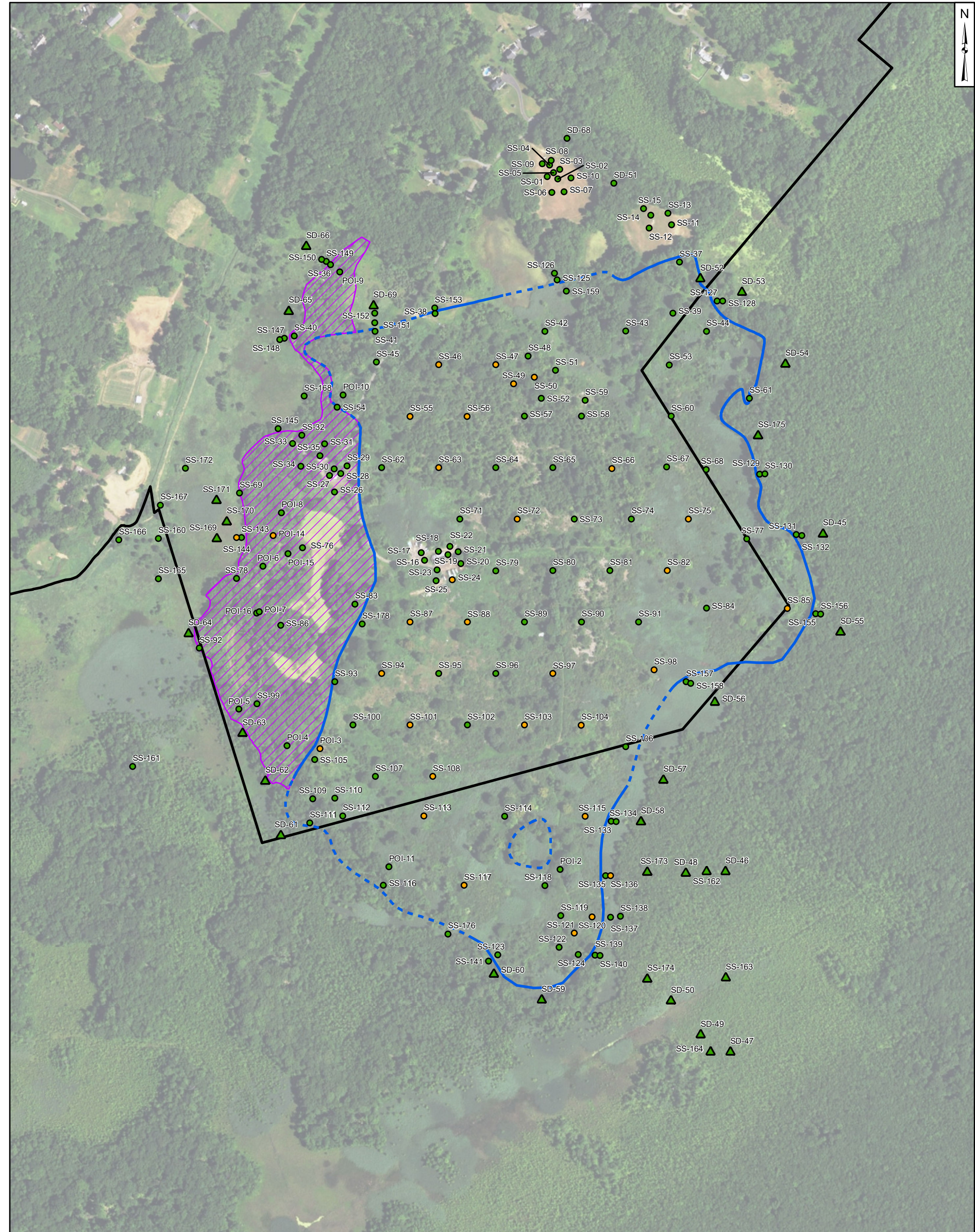
5002500500 Feet

Total Aroclor PCB Concentrations in Surface Soil
Rolling Knolls Landfill Superfund Site
Chatham, New Jersey

Geosyntec
consultants

Princeton, New JerseyNovember 2016

Figure
C-5



Legend
Arsenic Concentrations
Sediment
▲ Less than RDC/NRDC
▲ Exceeds RDC/NRDC (19 ppm)
Other Features
— Edge of Landfilled Wastes Observed During Test Pit Activities (dashed where approximate)
— Great Swamp National Wildlife Refuge Property Boundary
Waste and Debris Observed on Ground Surface But Not Anticipated to be Below Ground Surface

Soil
● Less than RDC/NRDC
● Exceeds RDC/NRDC (19 ppm)

Notes:
ppm - parts per million

RDC – New Jersey Residential Direct Contact Soil Remediation Standard.

NRDC – New Jersey Non-Residential Direct Contact Soil Remediation Standard.

Results of certain sediment samples are included where those sediment samples were obtained to help in delineation of constituents in soil.

Aerial imagery accessed via ArcGIS Online and provided by the United States Department of Agriculture on 29 Sep 2017. Image is dated 31 July 2015.

5002500500 Feet

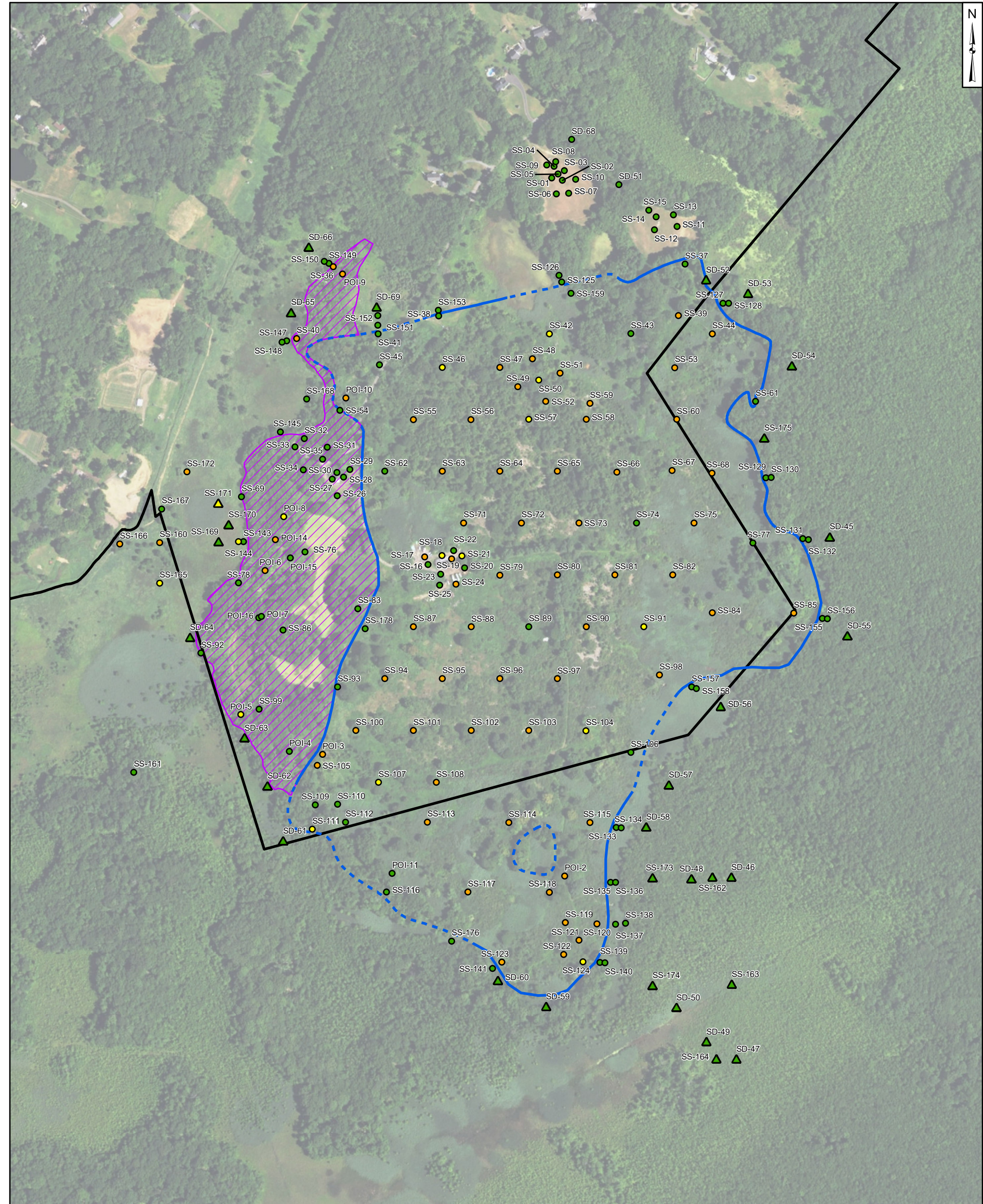
Arsenic Concentrations in Surface Soil
Rolling Knolls Landfill Superfund Site
Chatham, New Jersey

Geosyntec
consultants

Princeton, New Jersey

April 2017

Figure
C-6



Legend

Lead Concentrations

Sediment

- ▲ Less than RDC
- ▲ Exceeds RDC (400 ppm)
- ▲ Exceeds NRDC (800 ppm)

Soil

- Less than RDC
- Exceeds RDC (400 ppm)
- Exceeds NRDC (800 ppm)

Other Features

- Edge of Landfilled Wastes Observed During Test Pit Activities (dashed where approximate)
- Great Swamp National Wildlife Refuge Property Boundary
- ▨ Waste and Debris Observed on Ground Surface But Not Anticipated to be Below Ground Surface

Notes:

ppm - parts per million

RDC – New Jersey Residential Direct Contact Soil Remediation Standard.

NRDC – New Jersey Non-Residential Direct Contact Soil Remediation Standard.

Results of certain sediment samples are included where those sediment samples were obtained to help in delineation of constituents in soil.

Aerial imagery accessed via ArcGIS Online and provided by the United States Department of Agriculture on 29 Sep 2017. Image is dated 31 July 2015.

5002500500 Feet

Lead Concentrations in Surface Soil
Rolling Knolls Landfill Superfund Site
Chatham, New Jersey

Geosyntec
consultants

Princeton, New Jersey

April 2017

Figure
C-7