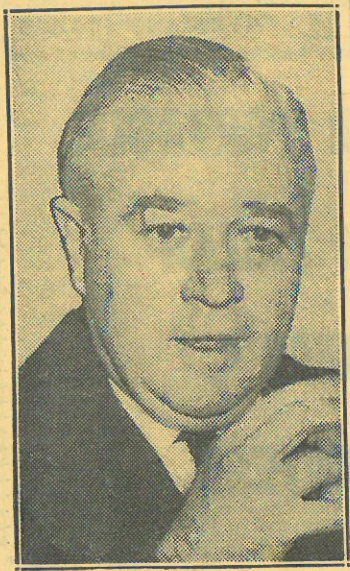


*Pay
Tax
Daily News*

PA Exec: It's A Jersey Jet Port, or None

If the Port Authority is not allowed to build a jet airport in Morris County, N. J., the metropolitan area will not have a fourth airport because "there's no second site," Austin J. Tobin, PA executive director, said yesterday.

Tobin, on the TV show, "Let's Find Out," said the PA had inspected 15 possible airport sites



Austin J. Tobin
Exec. Dir. Port Authority
War: Morris County site

and had come to the conclusion that the great swamp area in Morris County was the only practicable and possible one.

Evaluation of Opposition

He said local opposition was "a little less than I expected," although opposition is expected to arise in the New Jersey legislature.

Of the opposition, Tobin said: "All great public projects always tread on somebody's toes and everybody wants it and thinks it's a great thing if it's only done in the other fellow's back yard."

☆☆