



Foots Pond



Great Swamp Watershed Association

Protecting the waters of the Passaic River region, from source to sea.



Great Swamp Watershed Association

Step by step – DIY – Surgical Masks

Based on the instructions provided by Atlantic Health Systems web site.

Providing masks for local hospitals –
Morristown Medical Center
Overlook Medical Center
Hackettstown Medical Center

Supplies Needed -

- Tightly woven cotton, such as a dress shirt, sheet, or similar material, for the front layer
- Softer cotton, such as flannel, for the back layer
- Rope elastic, beading cord elastic or 1/8" flat elastic
- For rope elastic -cut the elastic 7" long and tie a knot at each end (for flat elastic cut 6 1/2")



Cut fabric and elastic



- Be sure any fabric design is placed horizontally
- Cut one piece of each type of fabric.
 - For adults – 9.5 inches by 7.5 inches
 - For children – 7.5 inches by 5 inches

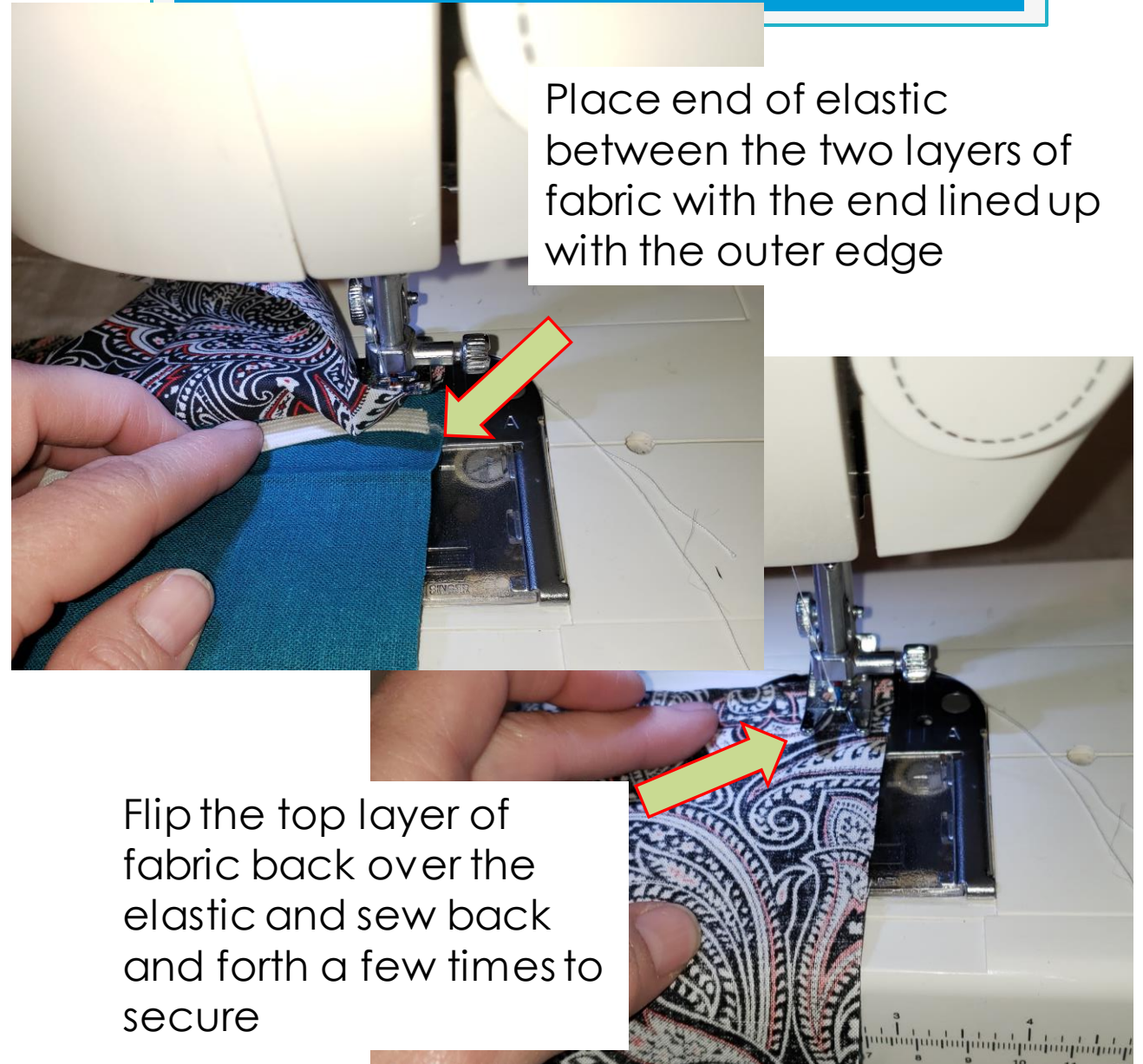
Sew

- Put right sides of the fabric together
- Starting at the center of the bottom edge, sew to the first corner



Insert Elastic

- At the first corner, sew one end of the elastic with the edge out and the length of the elastic inside.
- A few stitches back and forth over the end of the elastic will help to hold it firm.



Finish the elastic



- Sew along the short side to the next corner, stop, and bring the other end of the same piece of elastic to the corner
 - Again, sew a few times back and forth to secure
- Continue to sew around completing the elastic on the other short side in the same way

Finish sewing and turn right side out

- After finishing sewing the elastic, sew across the bottom leaving 1.5 to 2 inches open.
- Stop and cut the thread
- Turn mask right-side out
- Sew opening closed across the bottom



Turn right-side out, pulling through the opening left along the bottom edge



Sew opening closed when mask is right-side out

Sew in pleats

- Pin three pleats or tucks on each side of the mask.
- Make sure that the pleats on both sides of the mask are made in the same direction



Finish

- Sew twice completely around the edge of the mask securing the pleats.



Donation Locations

- Donation locations are located outside the main entrances of these facilities:
 - Morristown Medical Center
 - Overlook Medical Center
 - Hackettstown Medical Center

- Monday – Friday from 9am to 5pm donations will also be accepted at
 - 200 American Road, Morris Plains
 - 435 South Street, Morristown



GSWA wants to thank you for supporting your community and local health care providers.

