



Great Swamp Watershed Association

The Passaic River WATERKEEPER® ALLIANCE Affiliate

P.O. Box 300 • New Vernon, NJ 07976

(973) 538-3500 • GreatSwamp.org

Board of Trustees

Reed Auerbach
Kate Barry
Gerry-Jo Cranmer
Marilyn Dee
Michael Dee
Anthony DellaPelle
Jordan Glatt, Co-Chair
Todd Hyde
Eric Inglis
Ralph E. Jones, III
David Naidu, Co-Chair
David Robinson
Carolyn Sharaway
Lisa Stevens
Dorothea Stillinger
Stacey Valentine
Clark Wagner, Treasurer
Meisha Williams Bertels
Brett Williamson

Advisory Council

Kathy Abbott
Thelma Achenbach
Debra Apruzzese
Astri Baillie
Jose Barquin
Len Berkowitz
Nirav (Nick) Bodalia
Paul Boudreau
David Budd
Fred Castenschiold
Brenda Curnin
Andrew DeLaney
Jay DeLaney, Jr., *In Memoriam*
Carolyn Dempsey
William Diehl, M.D.
Russ Furnari
Sally Glick
Jeffrey Grayzel
Pam Harding
Judith Hazlewood
Roger Jones
Jane Kendall
Matthew Krauser
John Neale
Alan Pfeil
Kathy Pfeil
Guy Piserchia
Adam Psichos
Jon Rafalowski
Frances Schultz
Julia Somers
Frank Stillinger
Katherine Stinson
Giorgios Vlamis

Executive Director

Sally S. Rubin

Director of Development

Wade H.O. Kirby



February 17, 2023

Dear neighbors,

Help GSWA protect the local environment by joining us for a public meeting! Learn about a proposed development that could have significant environmental impacts on the area, and receive information on how to effectively argue for the protection of our waterways at an NJ Department of Environmental Protection (NJDEP) hearing.

Public Meeting: Proposed Development Informational Zoom Webinar

Date: Thursday February 23, 2023

Time: 7:00-8:00pm

Organizer: Great Swamp Watershed Association

Location: Virtual via Zoom; Register at GreatSwamp.org/Events

The S/K Mt Kemble development is a proposed 96-unit condominium complex, which would convert a wooded area to pavement and rooftops, significantly increasing impervious surfaces and stormwater volume which could result in downstream flooding and nonpoint source pollution. Already impaired streams like Loantaka Brook could be further impacted by increased effluent from the Woodland Wastewater Treatment Plant which would provide new extended sewer service to the development. While GSWA is *not* anti-development, protecting environmentally sensitive areas is vital to everyone.

GSWA's 73-acre floodplain forest, known as the Conservation Management Area (CMA) lies along the banks of the Silver Brook, a tributary to the Great Brook in Harding Township, immediately downstream from the proposed development. Over the last 20 years, we have worked to make the area accessible for educational programming and recreation, while also restoring the functional hydrology of this property and managing it for biodiversity and stormwater storage. This effectively helps to offset damaging downstream flood events.



Protecting our water and land for over 40 years



Our concerns include the piecemeal encroachment of development into freshwater wetlands, increased volume of water on downstream properties, measurable increases in waterway pollutants with the potential increase of harmful algal blooms (HABs), and potential long-term alteration to the hydrology of this headwaters stream and surrounding areas.

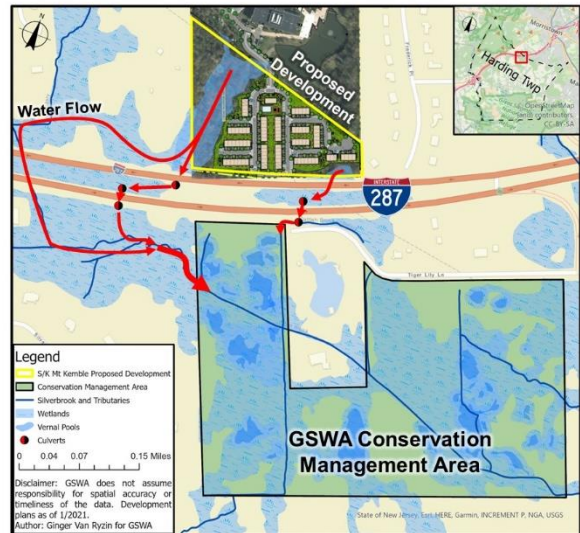
In response to GSWA's initial opposition and a barrage of public comments, the NJDEP has scheduled a **virtual public hearing on March 9th at 2pm** regarding the proposed development. This meeting *specifically* covers the addition of 9.3 acres of the parcel to the Northeast Water Quality Management Plan sewerage coverage area map. This technical detail allows GSWA and the public to express concerns about a number of water and ecology issues connected to the proposed development project.

Critical Action

Join GSWA staff and experts for a live webinar to learn about the project and its potential environmental impacts. We will offer clear and simple guidance on how YOU can raise your objections to the proposal at the virtual NJDEP hearing or in written comment directly to the NJDEP.

Our February 23, 2023 webinar will:

- Outline what the proposed S/K Mt Kemble development entails
- State our specific objections from water quality, stormwater, and other ecological standpoints
- Explain what will be covered in the NJDEP zoom hearing on March 9 and how you can participate
- Offer advice on how to make written and verbal comments that are concise, relevant, and effective to make your voice heard!



Everyone who registers for the webinar will receive the recording, even if you are unable to attend. The meeting and details will also be available on our website. Register at greatswamp.org under the events tab. Please share this information with friends and neighbors who would be willing to help.

Remember - “Never doubt that a small group of thoughtful, committed citizens can change the world: indeed, it’s the only thing that ever has.” – Margaret Mead

Sally S Rubin

Executive Director,
 Great Swamp Watershed Association



Follow the QR code to Register
 for the GSWA Webinar!

To make comments to NJDEP:

Details on how to access/attend the March 9 hearing will be made available on March 8th at <http://www.nj.gov/dep/wqmp/wmpnotices.html>

They will also be posted at GreatSwamp.org

Topics of concern include:

- Expansion to the wastewater treatment area map that is additional (not in-fill of an established area) in a designated water deficit area requiring changes to the Northeast Water Quality Management Plan
- Changes to the Northeast Water Quality Management plan map of sewerage coverage to include the development will create significant additional effluent discharge volume, through the Woodland Wastewater Treatment Plant, into Loantaka Brook, potentially adding additional nutrients to this already impaired tributary of the Passaic River.
- Encroachments into freshwater wetlands, and encroachments into and alteration of wetland transition areas (buffers). In some cases, these wetland encroachments would necessitate importing large amounts of fill that would be needed to recontour buffer areas or will be covered by impervious surfaces.
- Potential increases in pollutant loading and post-development runoff volume to Silver Brook due to the changes on site from forest area to the impervious cover of buildings, roads, and parking lots. This could also result in measurable increases in sediment, phosphorus, nitrogen, and salt loading to Silver Brook.
- Potential lack of on-site recharge of post-development rain-water runoff in a designated water recharge deficit area.
- Potential significant long-term hydrologic alterations of this headwaters stream and the adjacent riparian floodplain areas and wetlands.
- Possible impact to threatened and endangered species such as Wood Turtle and Indiana Bat.

Please submit written comments on the proposed amendment to the NJDEP
no later than March 23rd at:

**New Jersey Department of Environmental Protection
Division of Watershed Protection & Restoration
Bureau of NJPDES Stormwater Permitting & Water Quality Management Planning Program
PO Box 420, Mail Code 501-02A
501 East State Street Trenton, New Jersey 08625-0420**

or via email: wqmp.publiccomments@dep.nj.gov.

Comments **MUST** reference **Program Interest No. 435442, Activity No. AMD200007**
Please put comments in your own words.

NJDEP will not consider submissions that have been cut and pasted directly from another document.